



1

HE RARANGI  
PĀTANGA PAKIHI  
O ROTORUANZ

ROTORUANZ  
BUSINESS  
EVENTS GUIDE



ROTORUANZ  
BUSINESS EVENTS



# TE IHIRANGI | CONTENTS

Welcome	3
Venues	9
Hotels	29
Luxury Lodges	46
Event Services	52
Restaurants, Cafés and Bars	70
Activities	81
Corporate Social Responsibility	84
Itinerary Inspection	88





3



# NAU MAI | WELCOME

Kia ora

Rotorua is a destination that will both surprise and captivate you and your delegates. As a small regional city with big city facilities, Rotorua offers an impressive array of conference venues and accommodation options.

Beyond its modern facilities, Rotorua is renowned for its iconic natural attractions, including awe-inspiring geothermal wonders, enchanting forests with hundreds of kilometres of mountain biking trails, and an abundance of natural hot springs and spas.

Conveniently located, Rotorua is connected by air to all major cities and is less than a three-hour drive from Auckland and more than half of New Zealand's population.

With everything you need for a seamless event, Rotorua also stands as the heart of New Zealand's Māori culture. The genuine warmth and hospitality (manaakitanga) of Te Arawa, who have been welcoming visitors for over 150 years, ensure an unforgettable experience for any business event.

Ngā mihi

Business Events Team



**ROTORUA**<sup>NZ</sup>  
BUSINESS EVENTS



# ANEI MĀTAU | OUR TEAM



**Tony Dickson**

Business Events Portfolio Manager

[Tony.Dickson@rotoruaNZ.com](mailto:Tony.Dickson@rotoruaNZ.com)

021 387 808



**Leah Morrison**

Sales Executive - Business Events

[Leah.Morrison@rotoruaNZ.com](mailto:Leah.Morrison@rotoruaNZ.com)

022 416 4389



**Claudia McNeil**

Sales Executive - Business Events

[Claudia.McNeil@rotoruaNZ.com](mailto:Claudia.McNeil@rotoruaNZ.com)

027 393 7625

The RotoruaNZ Business Events team are your on-the-ground event specialists, who know all things Rotorua. We're here to help you find the best venue, accommodation, activity or supplier to ensure you plan a successful business event.





# MĀ MĀTAU E ĀWHINATIA

# HOW WE CAN HELP



Free Event Proposal



Site Inspections



Promotional Marketing Collateral and  
Delegate Marketing Resources



Corporate Social Responsibility Programmes



Itinerary Planning



Pre & Post Event Activity Packages



...and lots more, just ask!





# HE AHA AI A ROTORUA? | WHY ROTORUA?

## Meet in Rotorua

Rotorua offers a wide range of modern facilities including purpose-built event venues, a variety of accommodation options and eateries with cutting-edge cuisine. If you are organising an event, and you want it to stand out, start here.

## Welcome to our Home. Nau Mai, Haere Mai

Rotorua is under three hours' drive from Auckland. There are also direct flights from Auckland, as well as Wellington and Christchurch. Once you are here, getting around is easy. Nothing is more than a 10-minute walk or drive.

## Discover our Unique Landscapes

Nestled on the shores of Lake Rotorua, the district's geothermal features have created unique, otherworldly landscapes. Explore bubbling and steaming geothermal reserves, take in the volcanic craters, explore ancient forests or one of 18 sparkling lakes. Rotorua offers hundreds of kilometres of mountain biking trails, world-class golf courses, as well as a plethora of natural hot springs and spas. These incredible, surreal places will leave your delegates in awe and provide the most amazing backdrop for their photography.

## Experiences of a Lifetime

The manaakitanga (hospitality) and the welcoming spirit of our people make Rotorua the best place to connect with indigenous Māori people and learn about our culture, traditions and beliefs. Welcome your delegates with a pōhiri (traditional welcoming ceremony), learn to dance with poi or perform the haka, or feast on a traditional hangi. Whichever experience you choose will leave your delegates richer.





7

# KEI HEA A ROTORUA?

# WHERE IS ROTORUA?

## DOMESTIC

Approximate flight times to Rotorua 



 BRISBANE

 SYDNEY

 MELBOURNE

 AUCKLAND  
 ROTORUA

 HAMILTON  
 WELLINGTON

 CHRISTCHURCH

## TRANS-TASMAN

Approximate flight times from popular Australian cities to Auckland 

 3 HRS, 45 MINS

BRISBANE

 3 HRS, 30 MINS

SYDNEY

 4 HRS, 5 MINS

MELBOURNE



ROTORUA<sup>NZ</sup>  
BUSINESS EVENTS



8

# HE MAHERE O ROTORUA TAONE

## Venues

- 1 Rotorua International Stadium\*
- 2 Energy Events Centre, Rotorua
- 3 Sir Howard Morrison Centre
- 4 Te Puia
- 5 Mitai Māori Village
- 6 Hobbiton Movie Set\*
- 7 Motion Entertainment\*
- 8 The Black Barn\*
- 9 Level 13 Theme Rooms and Costume Hire
- 10 Terrace Kitchen
- 11 Skyline Rotorua\*
- 12 Te Pā Tū\*
- 13 Eastwood Café
- 14 Off Road NZ\*
- 15 Secret Spot Hot Tubs Rotorua\*
- 16 Agrodome\*
- 19 Pohutu Conference and Events Centre
- 30 The Venue @ ZORB Rotorua
- 31 Wai Ariki Hot Springs & Spa

## Hotels

- 17 Sudima Rotorua
- 18 Millennium Hotel Rotorua
- 19 Rydges Rotorua
- 20 Novotel Rotorua Lakeside
- 21 Ibis Rotorua
- 22 Arawa Park Hotel
- 23 Distinction Rotorua Hotel
- 24 Pullman Rotorua
- 25 Copthorne Hotel Rotorua
- 26 JetPark Hotel Rotorua
- 27 Prince's Gate Hotel
- 28 Regent of Rotorua
- 29 Quest Rotorua Central

### Te Manawa (CBD) to Skyline:

10 min 1 hour

### Te Manawa (CBD) to Te Puia:

6 min 40 min

\*Times are from CBD (City centre)

# ROTORUA CITY MAP

14 20 min drive  
16 10 min drive  
To Auckland 2.5 hour drive

To Skyline  
and Mitai Māori Village  
10 min drive

10min drive

To Taupō 1 hour drive

12 10 min drive  
15 3 min drive



- Helicopter
- Spa
- MT Biking
- Boat
- Floatplane
- Te Manawa (CBD)
- Pohutu Geyser
- Eat Street
- Energy Events Centre
- Ohinemutu
- Gondolas
- Lakefront



9

# HE PUKA WĀHI | VENUES PĀREKAREKA | DIRECTORY



# VENUES

	PG	NUMBER OF MEETING SPACES	THEATRE	CLASSROOM	BOARDROOM	U-SHAPE	BANQUET	CABARET	COCKTAIL	EXHIBITION
<a href="#">Rotorua International Stadium</a>	<a href="#">11</a>	4	20,000	60	-	-	100	-	180	-
<a href="#">Energy Events Centre, Rotorua</a>	<a href="#">12</a>	9	4,000	2,490	-	-	2,600	2,080	5,650	279
<a href="#">Sir Howard Morrison Centre</a>	<a href="#">13</a>	7	918	200	20	-	220	144	550	28
<a href="#">Agrodome</a>	<a href="#">14</a>	3	700	60	50	60	550	-	700	-
<a href="#">Eastwood Café</a>	<a href="#">15</a>	1	-	-	-	-	140	-	250	-
<a href="#">Hobbiton Movie Set</a>	<a href="#">16</a>	4	130	60	60	40	230	140	300	-
<a href="#">Level 13 Theme Rooms and Costume Hire</a>	<a href="#">17</a>	5	70	25	22	15	60	-	85	-
<a href="#">Motion Entertainment</a>	<a href="#">18</a>	3	150	80	90	50	90	90	878	-
<a href="#">Off Road NZ</a>	<a href="#">19</a>	1	-	-	-	-	120	-	150	-
<a href="#">Secret Spot Hot Tubs Rotorua</a>	<a href="#">20</a>	1	-	-	-	-	65	-	65	-
<a href="#">Skyline Rotorua</a>	<a href="#">21</a>	3	-	-	-	-	350	350	1,000	-
<a href="#">Te Pā Tū</a>	<a href="#">22</a>	6	150	60	12	9	150	90	200	-
<a href="#">Te Puia</a>	<a href="#">23</a>	4	300	50	20	25	300	240	300	-
<a href="#">Terrace Kitchen</a>	<a href="#">24</a>	2	50	-	20	-	80	-	120	-
<a href="#">The Black Barn</a>	<a href="#">25</a>	1	-	-	-	-	150	-	150	-
<a href="#">The Pohutu Conference and Events Centre</a>	<a href="#">26</a>	1	500	250	-	-	300	252	750	-
<a href="#">The Venue @ ZORB</a>	<a href="#">27</a>	7	90	50	50	40	80	40	90-150	-
<a href="#">Wai Ariki Hot Springs &amp; Spa</a>	<a href="#">28</a>	4	-	20	-	150	45-250	-	40-350	-



# ROTORUA INTERNATIONAL STADIUM

The Rotorua International Stadium is able to host a variety of events, from intimate cocktail functions to large concerts of up to 20,000 spectators. The John Keaney Grandstand's top level includes two lounges and two corporate boxes perfect for dinners overlooking the floodlit field.

Just a seven-minute drive from the heart of downtown Rotorua, the iconic stadium offers extensive car and coach parking.

- Adjoining lounges overlooking the main field offer the ability to move from conference to dining quickly and efficiently.
- Intimate incentive dinners can create a sensation when set centre field. Red carpets cross the lawn to a unique dining occasion.
- A perfect venue for team building and motivational speakers to ignite the spark of success for your conference.



Venue Information:	THEATRE	CLASSROOM	BOARDROOM	U-SHAPE	BANQUET	CABARET	COCKTAIL
John Keaney Grandstand	5,200	-	-	-	-	-	-
Terraces Stand	5,000	-	-	-	-	-	-
Hepburn Electrical Lounge	80	50	-	-	80	-	140
Compass Lounge	100	60	-	-	100	-	180
Stadium Full Capacity	20,000	-	-	-	-	-	-
<b>Number of meeting spaces</b>	<b>4</b>						



LOCATION



MORE INFO

## ENERGY EVENTS CENTRE, ROTORUA

Positioned on the edge of Lake Rotorua in the picturesque Government Gardens, the Energy Events Centre is within an easy walk to the central city, Eat Street dining precinct and other cafés and restaurants, retail shops, Rotorua's iconic Polynesian Spa, and a range of accommodation options.

This versatile, purpose-built venue incorporates 10 flexible spaces, making it perfect for conferences, exhibitions, banquets, sporting events, concerts and more. Extensive parking is just outside the door and always free.

The venue is supported by a full suite of services and infrastructure to make your event, from intimate meeting to grand gala dinner, one to remember.

- The Grand Hall is a captivating space of epic proportions offering extensive lighting combined with traditional and contemporary Māori art.
- Majestic carved doors lead into the BayTrust Forum where floor-to-ceiling backlit wall patterns bring the space to life.
- The Unison Arena is a multi-functional area with more than 3,500m<sup>2</sup> of single-level, pillar-free, conference and exhibition space.



Venue Information:	THEATRE	CLASSROOM	BOARDROOM	EXHIBITION	BANQUET	CABARET	COCKTAIL
Grand Hall	-	-	-	50	-		2,130
BayTrust Forum	850	600	-	60	700	560	2,100
Unison Arena 1,2,3	4,000	2,490	-	279	2,600	2,080	5,650
Southern Trust Sportsdrome	1,210	1,160	-	110	700	560	1,800
Breakouts (5)	70-110 per room	40-60 per room	-	-	-	-	1,800
<b>Number of meeting spaces</b>	<b>9</b>						



VIRTUAL TOUR



LOCATION



MORE INFO

# SIR HOWARD MORRISON CENTRE

Following a multi-million dollar refurbishment, the Sir Howard Morrison Centre is an outstanding regional event facility with the 900+ seat Sir Owen Glenn Theatre | Matangi Rau at its heart.

This Category 1 heritage building combines Spanish Mission style architecture with contemporary Māori design to offer a diverse and elegant venue for conferences, tradeshow and gala dinners.

Seven flexible spaces are matched with state-of-the-art audio visual capabilities and an experienced and passionate events team.

Located in central Rotorua, the Sir Howard Morrison Centre is a brief stroll to major hotels, retail and dining precincts and the recently redeveloped lakefront.

- The spacious foyer offers 8m high ceilings and is awash with natural light, perfect for exhibitions and plenary breaks.
- The 900+ theatre offers modern tiered seating and an adjustable stage so you can really put the spotlight on keynote speakers.
- Multiple spaces offer unique flexibility for business events; plenary, trade shows, breakouts and gala dinners, all in one venue.



Venue Information	Theatre Style	Board Room	Cocktail/Reception	Exhibition	Banquet	Concert/Standing
Te Haumihi   Foyer	100	-	550	260/13	220	-
Sir Owen Glenn   Matangi Rau	902	-	-	-	100	-
Te Haumako   Black Box Theatre	288	-	300	170/13	120	450
Te Whakaruruhau   Banquet Room	300	-	350	260/16	220	340
Kaihaukai   Cafe and Bar	-	-	65	-	20	-
Te Papa Huarewa   Mezzanine	-	-	80	-	-	-
Kapua Nui & Kapua Roa   Studio 1 & 2	35	10	-	-	-	-
Matatea   Large Studio	64	20	40	-	-	-
<b>Number of meeting spaces</b>	<b>8</b>					



LOCATION



MORE INFO

## AGRODOME

In the heart of lush farmland, yet only 10 minutes from Rotorua city centre, you'll find New Zealand's Agrodome. The Agrodome is located on a real working farm with an orchard and a variety of animals including sheep, alpaca, cattle and working farm dogs.

Whether you're looking for venue to host your event, getting the team together for some team building or just want to get away from the hustle and bustle of town, Agrodome is the place to be.

Choose between 3 unique indoor venues, paddock to plate style dining options and a variety of add on activities.

- Host your event in one of our unique farm venues, where old farm charm and rustic ambiance create a magical setting.
- Indulge yourself in a locally sourced farm-to-plate culinary journey with a uniquely Kiwi BBQ twist at The Agrodome.
- Enjoy our Farm Show and Farm Tour featuring 19 sheep breeds and an opportunity to explore the farm and hand-feed animals.



Venue Information:	THEATRE	CLASSROOM	BOARDROOM	U-SHAPE	BANQUET	CABARET	COCKTAIL
Bowen Barn	120	60	50	60	120	-	200
Hutchings Cattle Pavilion	700	-	-	-	550	-	700
Bowen House	-	-	-	-	30	-	50
Bowen House with Outside Lawn	-	-	-	-	80	-	120

Number of meeting spaces 3



LOCATION



MORE INFO

# EASTWOOD CAFÉ

Arriving at Eastwood, you'll be captivated by the building and its design, followed by the Mediterranean-styled pizza oven that takes centre stage in the clean, modern open-plan kitchen.

Eastwood is a great spot for a relaxed welcome event - available for exclusive use during the evenings with plenty of seating inside and out. Eastwood tailors a grazing style dinner menu to suit your needs and appetite, including fabulous wood-fired pizzas.

You'll find Eastwood nestled at the feet of Whakarewarewa Forest on the bustling Scion Research campus.

- Located in the award-winning, carbon-zero building, Te Whare Nui o Tuteata.
- The specialty wood-fired pizzas are a must-try. Watch them being made at the pizza bar.
- Ideal venue for a relaxed, delicious dinner.



Venue Information:	THEATRE	CLASSROOM	BOARDROOM	U-SHAPE	BANQUET	CABARET	COCKTAIL
Indoor	-	-	-	-	58	-	150
Outdoor	-	-	-	-	80	-	120
Indoor and outdoor	-	-	-	-	140	-	250
<b>Number of meeting spaces</b>	0						



LOCATION



MORE INFO

## HOBBITON MOVIE SET

Add some Middle-earth™ movie magic to your next event.

At Hobbiton Movie Set, your guests will be immersed in the natural beauty of Middle-earth with a two and a half hour fully guided tour of the famous movie set as seen in The Lord of the Rings and The Hobbit trilogies.

Your guide will escort you around the Movie Set, past Hobbit Holes, through the interiors of Bagshot Row™, past the Millhouse and into the Green Dragon™ Inn, where you can indulge in the tastes of Middle-earth. Hobbiton Movie Set offers a range of private function options to suit your needs.

- Hobbiton Movie Set offers a range of unique venues fit to host your next event and give your guests an experience to remember.
- The Millhouse venue is expertly crafted, themed venue, offering a warm and inviting atmosphere for intimate events and meetings.
- The Hub conference venue offers flexible meeting rooms and stunning views overlooking the surrounding farmland and rolling green hills.



Venue Information:	THEATRE	CLASSROOM	BOARDROOM	U-SHAPE	BANQUET	CABARET	COCKTAIL
The Green Dragon Inn	-	-	-	-	64	80	180
The Millhouse	48	-	32	-	32	-	48
The Hub	130	60	60	40	100	140	160
The Party Marquee	-	-	-	-	230	-	300
<b>Number of meeting spaces</b>	<b>4</b>						



LOCATION






MORE INFO

## LEVEL 13 THEME ROOMS AND COSTUME HIRE

Gathering in creative spaces enables us to think outside the square, fostering creative thinking and problem solving.

Level 13 Theme Rooms and Costume Hire is a unique venue. There are five themed rooms which open to a central bar area which is fully licenced. Hire the whole venue or individual rooms for meetings, workshops, presentations, and evening functions. The rooms can be used as breakout rooms from the central area.

Level 13 can arrange morning and afternoon teas, as well as working lunches. Outside caterers can provide a range of options from platters to three-course meals and grazing tables for evening gala dinners.

-  Five themed breakout rooms with a central bar area. Large screen behind the bar and three smaller screens inside rooms.
-  Centrally located meeting rooms available for hire at hourly rates.
-  A microphone system extends to individual rooms or all of them.



Venue Information:	THEATRE	CLASSROOM	BOARDROOM	U-SHAPE	BANQUET	CABARET	COCKTAIL
Level 13 Whole Site	70	-	22	15	60	-	85
The Rocket Room	25	25	-	12	-	-	30
Ritz and Speakeasy	30	20	22	-	30	-	40
221B	12	12	12	-	12	-	-
The Keep	10	10	12	9	12	-	-
<b>Number of meeting spaces</b>	<b>5</b>						



LOCATION



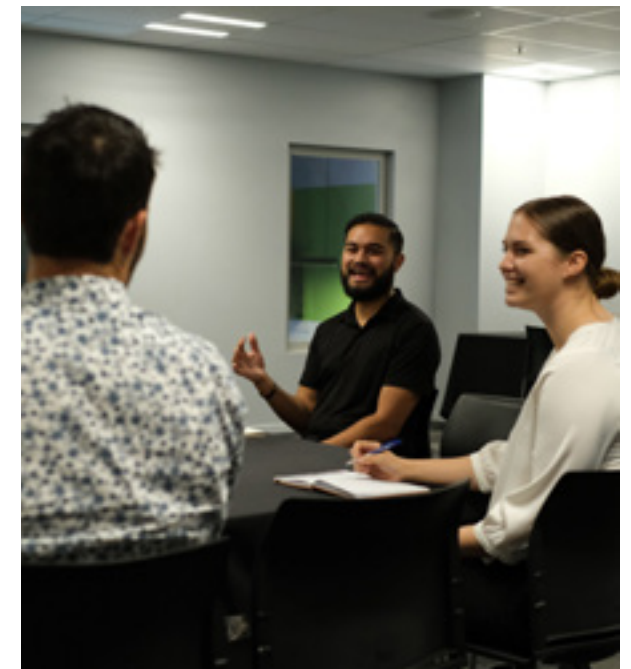
MORE INFO

# MOTION ENTERTAINMENT

Motion Entertainment is the ultimate venue, like no other in the country. With 10 epic attractions to choose from, Motion Entertainment will give your guests an experience they'll always remember.

Try something new or stick with the classics, we've got you covered with 6,000 square meters of fun all under one roof. Tenpin Bowling, Mini Golf, Hologate Virtual Reality, XD Dark Ride, Tramp Park, Timezone arcade, Escape rooms, Kids playland, Fully Licensed Bar and Cafe, the options are endless at Motion Entertainment.

- 10 epic attractions under one roof with a licenced bar.
- Full and partial venue buyouts available.
- Flexible purpose built conference centre upstairs with the latest AV equipment installed
- Team Building? We've got multiple options. Virtual reality challenges, Ten Pin Bowling group competitions, Adult obstacle courses or Mini Golf. We can customize the activities to suit your requirements.



Venue Information:	THEATRE	CLASSROOM	BOARDROOM	U-SHAPE	BANQUET	CABARET	COCKTAIL
Full Venue Hire	-	-	-	-	-	-	878
Conference Centre	150	80	90	50	90	90	150
Tenpin Bowling	-	-	-	-	-	-	84
Timezone Arcade	-	-	-	-	-	-	100
Xtreme Air Trampoline Park	-	-	-	-	-	-	50
Lumberjax Mini Golf	-	-	-	-	-	-	50



LOCATION



MORE INFO

# OFF ROAD NZ

## Native Bush Camp Dining Venue

This rustic-style catering venue is the perfect setting for a catered 'feast in the wilderness'.

Party on into the night with drinks, food and entertainment; or simply kick back with Mother Nature and soak up the tranquility with good food, good wine and good company.

Set amongst beautiful native forest, the large covered dining area accommodates groups of all sizes in all weathers. This area includes permanent shelter for up to 120 persons with removable wall panels for great indoor-outdoor flow, tables, seating, BBQ hire, campfire, lighting, toilets, hot & cold water, easy coach access and ample parking.

- Surrounded by native forest, soak up mother nature in a tranquil setting.
- No neighbours for noise disturbance.
- Activities available alongside the venue including Monster 4x4 Trill Rides, Raceline Karting, 4WD Bush Safaris, Claybird Shooting and Archery.



Venue Information:	THEATRE	CLASSROOM	BOARDROOM	U-SHAPE	BANQUET	CABARET	COCKTAIL
Native Bush Camp Dining	-	-	-	-	120	-	150

Number of meeting spaces 1



LOCATION



MORE INFO

## SECRET SPOT HOT TUBS ROTORUA

Secret Spot Hot Tubs has created BaseCamp, a luxe safari tent venue on the forest edge that's perfect for your next function or family get-together.

BaseCamp seats 65 people, with two open firepits setting the scene. You can enjoy a range of craft drinks from the cedarwood bar and can choose from catered food options, such as authentic South African braai or tasty platters. There's also a range of street food, including smash burgers, available from BaseCamp.

Explore Secret Spot further and enjoy a complimentary Shiny Dip foot hot tub or book a cedar hot tub and cold plunge tub to soak away your stress.

- BaseCamp is a luxe glamping tent complete with a cedarwood bar, two firepits, antler chandeliers, and a range of seating options.
- BaseCamp offers Good George craft beer and cider, local wines, non-alcoholic beverages, and a variety of tasty street food and catering options.
- Experience our unique BaseCamp street food café and bar, cosy up next to one of our outdoor campfires, play giant lawn games, or enjoy a Shiny Dip foot hot tub – free with any drinks purchase.
- As a Qualmark Gold Accredited business, we prioritize low-carbon practices and maintain high-quality facilities, ensuring we have a minimal environmental footprint.



Venue Information:	THEATRE	CLASSROOM	BOARDROOM	U-SHAPE	BANQUET	CABARET	COCKTAIL
BaseCamp	-	-	-	-	65	-	65
<b>Number of meeting spaces</b>	1						



VIRTUAL TOUR



LOCATION



MORE INFO

# SKYLINE ROTORUA

Stratosfare Restaurant is set amongst the stars atop Mount Ngongotahā. Stratosfare offers a truly unique event venue with exceptional cuisine, excellent catering and unforgettable views that will ensure your next event is a success.

Ride the sweeping bends of Skyline’s Tiki Tour Luge track to the Hidden Forest Venue, which is nestled within the towering Redwood forest. This purpose-built, white marquee venue offers a distinctive setting that is unique from any other venue in Rotorua.

The Volcanic Hills Winery & Tasting Room is a great venue to host a small executive dinner, event, or an upmarket cocktail party.

- Access the venues via a scenic Gondola ride.
- Enjoy amazing views of Lake Rotorua during the day and the twinkling lights of the city at night.
- Fantastic catering options are on offer, inspired by iconic New Zealand cuisine infused with international influences.



Venue Information:	THEATRE	CLASSROOM	BOARDROOM	U-SHAPE	BANQUET	CABARET	COCKTAIL
Whole Skyline Site	-	-	-	-	-	-	1,000
Stratosfare Restaurant	-	-	-	-	350	350	450
Hidden Forest	-	-	-	-	150	-	220
Pohutu	-	-	-	-	-	120	150
Market Kitchen	-	-	-	-	-	-	100
Volcanic Hills Winery & Tasting Room	-	-	-	-	-	40	80
<b>Number of meeting spaces</b>	<b>3</b>						



VIRTUAL TOUR



LOCATION



MORE INFO

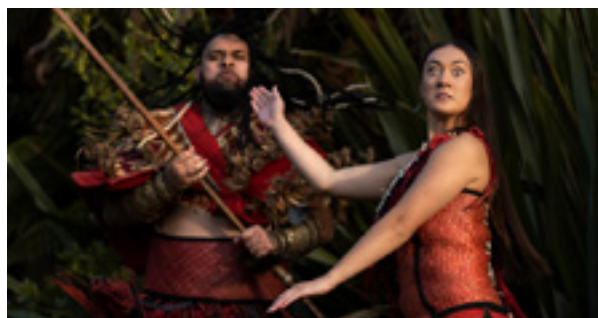
# TE PĀ TŪ

## Te Pā Tū (previously Tamaki Māori Village)

Feast on song, drama, tradition, and divine seasonal kai (cuisine) within a forest pā (village), with its towering tawa trees, blazing bonfires, and forest-formed amphitheatre.

Te Pā Tū offers four-hour seasonal evening events aligned with the Māori lunar calendar. Traditional hāngī joins seasonal Māori delicacies prepared with fusion cooking techniques, which are perfect for a gala dinner or unique dining experience.

- Feast on a lavish but relaxed three-course fusion dinner where the world-famous traditional hāngī shares the table with other seasonal delicacies.
- Enjoy the breath-taking scenery.
- Gain cultural knowledge unique to each season.
- Te Pā Tū is intended as a tourism operation that gives more than it takes – sustaining land, place, stories and people.



Venue Information:	THEATRE	CLASSROOM	BOARDROOM	U-SHAPE	BANQUET	CABARET	COCKTAIL
Wharenui	150	-	-	-	-	-	-
Village Venue	-	-	-	-	-	-	200
Totara	-	60	-	-	150	90	-
Kauri	-	-	-	-	120	60	-
Whakapiripiri	25	-	12	9	-	-	-
Te Ao Huri	25	-	12	9	-	-	-
<b>Number of meeting spaces</b>	<b>6</b>						



LOCATION



MORE INFO

# TE PUIA

Set amongst the backdrop of Te Whakarewarewa Geothermal Valley are unique venues and experiences.

Te Puia is an iwi-owned visitor attraction and home to a beautiful venue, Pātaka Kai restaurant, which overlooks the Southern Hemisphere's largest active geyser, 'Pōhutu'.

Many Te Puia kaimahi (staff) are direct descendants of the original guides of the valley who were world-famous for their incredible and warm hospitality. This philosophy, known as manaakitanga, is central to the experiences provided at Te Puia and throughout Rotorua.

- Te Puia offers venues that overlook Pōhutu Geyser, the largest active natural geyser in the Southern Hemisphere.
- Whether holding a cocktail or dining function, or enjoying a steamed pudding treat during a tour, the indigenous-inspired kai (food) at Te Puia infuses Māori herbs with unique cooking locations and experiences incorporating the natural environment.
- The New Zealand Māori Arts & Crafts Institute, and Kiwi Conservation Centre are also located at Te Puia.



Venue Information:	THEATRE	CLASSROOM	BOARDROOM	U-SHAPE	BANQUET	CABARET	COCKTAIL
Te Whakaruruhau Banquet Hall	300	-	-	-	300	240	300
Pātaka Kai Restaurant	-	-	-	-	130	-	220
Te Whare Tapere Meeting Room	70	50	-	25	-	-	-
Te Puke a Ruahine Geyser Marquee	-	-	-	-	40	-	70
Ngāraratuatara Geothermal Cooking Pool Marquee	-	-	-	-	30	-	-
Te Poari Conference and Meeting Room	-	-	-	-	120	-	-
Pōhutu Board Room	-	25	20	20	-	-	-
<b>Number of meeting spaces</b>	<b>4</b>						



VIRTUAL TOUR



LOCATION



MORE INFO

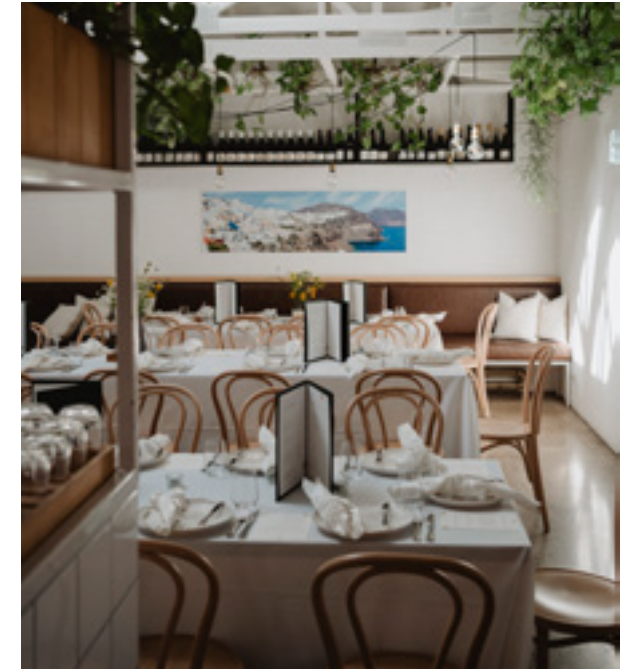
# TERRACE KITCHEN

Strategically situated at the recently redeveloped Rotorua Lakefront, this exceptional venue offers an array of beautifully designed spaces, paired with modern, seasonal menus.

Step inside the glass pavilion and be treated with the ultimate alfresco experience. With floor to ceiling glass and opening skylights, guests can comfortably enjoy celebrations adorned with natural light while looking through to a sheltered gravel courtyard complete with festoons, a mature olive tree and European influenced planting.

While the glasshouse acts as a blank canvas to your event theming, step outside and the landscaping is the star of the show. Split into two sections of roughly equal proportions, a row of native Titoki trees divide the courtyard into two intimate spaces.

- Food is at the heart of Terrace Kitchen's ethos, with an open kitchen to catch a glimpse of the action and items grown in the onsite garden.
- All the spaces have been designed with attention to detail - white tiling, natural timbers, abundance of light, and greenery aplenty.
- Located in the central city, just a stone's throw from your conference hotel.



Venue Information:	THEATRE	CLASSROOM	BOARDROOM	U-SHAPE	BANQUET	CABARET	COCKTAIL
Dining Room	50	-	20	-	64	-	80
Glass Pavilion	-	-	-	-	64	-	80
Full Venue	-	-	-	-	150	-	220
<b>Number of meeting spaces</b>	<b>2</b>						



LOCATION



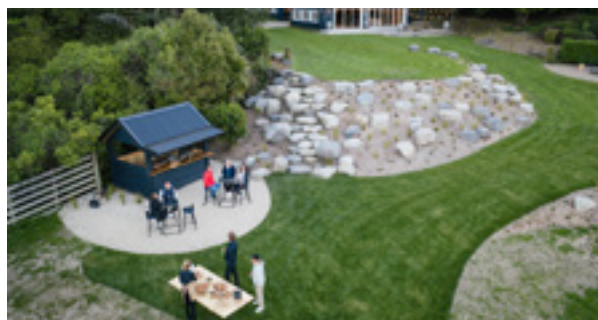
MORE INFO

# THE BLACK BARN

The Black Barn is a boutique venue for events of up to 150 guests. Set on 65 acres of native bush and farmland, its position atop a ridgeline provides you and your guests with privacy, tranquility and stunning lake and mountain vistas.

The Black Barn work with some of the highest regarded chefs and caterers in the region and beyond. From a plated five course sit-down menu to more casual grazing options, contemporary New Zealand cuisine to Asian fusion, options can be provided to suit your style and budget.

- Feature stone firepit, a great focal point in the evening. Perfect for toasting marshmallows over an open fire, making smores or just reflecting on the day with a glass of the finest and great company.
- An event at The Black Barn has an atmosphere of intimacy and elegance whilst still retaining that down to earth, relaxed kiwi charm.
- The natural beauty of the landscape is a photographer's dream, with grassy meadows all around and gorgeous native bush, forest, lake and mountain backdrops.
- The Black Barn is available October through to April; Monday, Tuesday and Wednesday for coporate events. Other dates may be available on request.



Venue Information:	THEATRE	CLASSROOM	BOARDROOM	U-SHAPE	BANQUET	CABARET	COCKTAIL
The Black Barn	-	-	-	-	150	-	150
Number of meeting spaces	1						



LOCATION



MORE INFO

## THE POHUTU CONFERENCE AND EVENTS CENTRE

With the impressive Whakarewarewa geothermal preserve in full view and underpinned by modern Māori styling, the Pohutu Conference and Events Centre inside Rydges Rotorua brings people together in a space that is designed for maximum connection, collaboration and celebration.

The expansive event space comfortably accommodates up to 750 delegates for cocktails or 300 people for a banquet-style soiree. With the recent upgrade of AV equipment, integrated WiFi and black-out blinds, the creative space offers all the added extras you need to host your next event. Plus, with flexible catering packages, free onsite parking, and accommodation available, you'll have complete peace of mind for your event.

- Accommodates up to 750 guests cocktail style.
- Natural light and views of Whakarewarewa
- New state-of-the-art audio visual equipment including projectors, integrated audio and customisable lighting systems



Venue Information:	THEATRE	CLASSROOM	BOARDROOM	U-SHAPE	BANQUET	CABARET	COCKTAIL
The Pohutu Conference and Events Centre	500	250	-	-	300	252	750
Number of meeting spaces	1						



LOCATION



MORE INFO

## THE VENUE @ ZORB

Perched looking over the ZORB site, The Venue offers the contrast of the peaceful pastoral countryside to one side with the adventure playground to the other. It's all about bringing people together in a way that's fun, memorable, and just a little bit epic.

Featuring a modern shipping container bar, kitchen, a stylish outdoor cooking area complete with dual gas/wood-fired pizza oven and BBQ grill, with outdoor bar leaners and picnic tables. A permanent Marquee provides indoor seating for up to 80 guests banquet-style or 120 for cocktail events. The additional outdoor area further expands the capacity up to 150pax.

Designed to accommodate a variety of needs, The Venue @ ZORB can be booked year-round either as a standalone event space for meetings, functions or in combination with ZORB's world-famous downhill ball-rolling adventures & team building challenges.

- Brand new on trend venue with a difference, only a 10 min drive from Rotorua City Centre
- The only place in New Zealand where you can ZORB
- Stunning countryside setting with Lake & farm views with ZORB as the backdrop



Venue Information:	THEATRE	CLASSROOM	BOARDROOM	U-SHAPE	BANQUET	CABARET	COCKTAIL
The Venue @ ZORB	90	50	50	40	80	40	90-150
Number of meeting spaces	1						



LOCATION



MORE INFO

# WAI ARIKI HOT SPRINGS AND SPA

Discover Wai Ariki Hot Springs and Spa — Rotorua’s premier destination for luxury, culture, and transformative wellbeing.

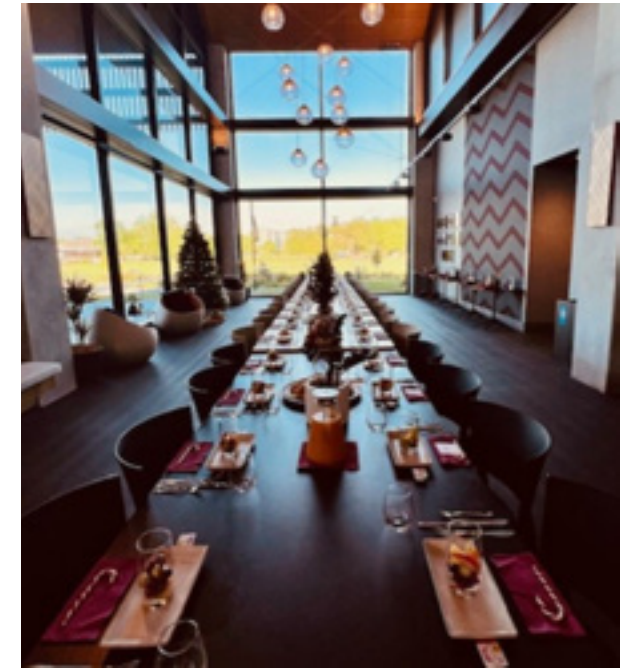
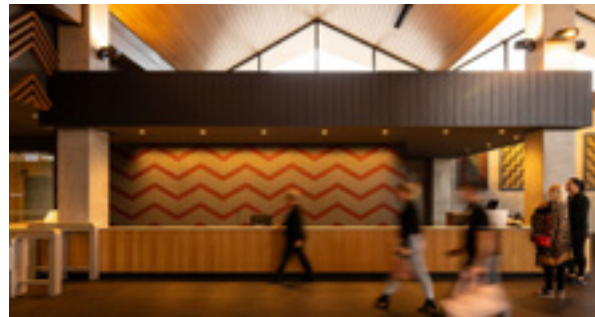
Set on the stunning shores of Lake Rotorua, Wai Ariki (“Chiefly Waters”) blends world-class spa experiences with the powerful healing traditions of Ngāti Whakaue.

Immerse yourself in therapeutic thermal pools, a one-of-a-kind geothermal mud lounge, indulgent massages, premium facials, and our signature wellness journeys: the restorative Wai Whakaora and the exclusive Āhuru Mōwai sanctuary.

Authentic, unforgettable, and uniquely Aotearoa, Wai Ariki offers an elevated escape that inspires, restores, and delights.

Your transformative spa experience awaits — step into pure luxury.

- Impress delegates in the expansive Main Foyer — a striking architectural showcase perfect for grand welcomes, elegant dinners, and high-energy cocktail receptions.
- Elevate exhibitions and activations in the flowing Main Concourse — a premium, high-capacity space designed for seamless networking and immersive brand engagement.
- Deliver standout VIP experiences in the refined Sanctuary spaces — intimate, luxurious environments ideal for executive meetings, exclusive hosting, and elevated private dining.



Venue Information:	THEATRE	CLASSROOM	BOARDROOM	U-SHAPE	BANQUET	CABARET	COCKTAIL
The Foyer	-	-	-	-	250	-	350
The Main Concourse	-	-	-	150	-	-	220
The Sanctuary Concourse	-	-	-	-	45	-	70
The Sanctuary Lounge	-	20	-	-	-	-	40
<b>Number of meeting spaces</b>	<b>4</b>						





29

# NGĀ HŌTĒRA | HOTELS





# NGĀ HŌTĒRA

## HOTELS

	PG	ACCOMMODATION ROOMS	NUMBER OF MEETING SPACES	THEATRE	CLASSROOM	BOARDROOM	U-SHAPE	BANQUET	CABARET	COCKTAIL
<a href="#">Arawa Park Hotel Rotorua</a>	<a href="#">31</a>	135	7	320	160	80	80	300	160	600
<a href="#">Cophorne Hotel Rotorua</a>	<a href="#">32</a>	110	6	340	110	70	80	200	140	340
<a href="#">Distinction Rotorua Hotel</a>	<a href="#">33</a>	133	8	500	250	50	50	320	-	500
<a href="#">Ibis Rotorua</a>	<a href="#">34</a>	145	-	-	-	-	-	-	-	-
<a href="#">JetPark Hotel Rotorua</a>	<a href="#">35</a>	63	1	30	12	16	15	-	-	-
<a href="#">Millennium Hotel Rotorua</a>	<a href="#">36</a>	227	7	350	160	35	50	160	128	350
<a href="#">Novotel Rotorua Lakeside</a>	<a href="#">37</a>	199	11	350	144	30	70	300	240	500
<a href="#">Prince's Gate Hotel</a>	<a href="#">39</a>	50	6	100	60	50	40	90	75	120
<a href="#">Pullman Rotorua</a>	<a href="#">40</a>	130	8	150	80	20	20	112	84	150
<a href="#">Quest Rotorua Central</a>	<a href="#">42</a>	35	-	-	-	-	-	-	-	-
<a href="#">Regent of Rotorua</a>	<a href="#">43</a>	47	4	80	60	20	40	80	-	100
<a href="#">Rydges Rotorua</a>	<a href="#">44</a>	203	7	500	250	80	80	300	252	750
<a href="#">Sudima Rotorua</a>	<a href="#">45</a>	242	6	260	120	20	20	140	180	400

# ARAWA PARK HOTEL ROTORUA

135 |

Arawa Park Hotel Rotorua boasts panoramic views over Arawa Racecourse and the city of Rotorua. It features 135 stylish guest rooms including 90 Deluxe Rooms and five Suites. The hotel's conference venues boasts over 560m<sup>2</sup> of event space utilising seven separate rooms with free Wi-Fi. Arawa Park caters for conferences, meetings, events, and functions from 10 to 600 guests.

- Seven flexible and functional venues.
- The spacious accommodation rooms are renowned for being the largest in the city.
- Quiet location yet close to Eat Street and the Lakefront, with plenty of free parking onsite.



Venue Information:	THEATRE	CLASSROOM	BOARDROOM	U-SHAPE	BANQUET	CABARET	COCKTAIL
Ascot	320	160	80	80	200	160	400
Aintree	180	100	60	60	110	100	180
Totara	80	40	40	35	65	45	80
Manuka	80	40	32	30	65	40	80
Executive Boardroom	-	-	28	-	28	-	-
Nikau	-	-	10	-	10	-	-
Atrium Restaurant	-	-	-	-	300	-	600

Number of meeting spaces 7



LOCATION



MORE INFO

# COPTHORNE HOTEL ROTORUA

110 |

An iconic landmark in Rotorua, the magnificent Māori warrior cast in bronze welcomes visitors to the Copthorne Hotel Rotorua.

Situated in the midst of a region that offers unique geothermal wonders, enjoy the best facilities and surrounds, from the newly tiled swimming pool to clean, contemporary, stylish accommodation.

Copthorne Hotel Rotorua is endorsed with a Qualmark 4 Star and Enviro Silver rating and is a member of the Rotorua Sustainable Charter.

- Secure gated 50 car carpark at the front of the hotel with access via code only.
- Six spacious conference rooms to cater for small or large events from corporate to leisure.
- On-site restaurant open seven days a week for breakfast.



Venue Information:	THEATRE	CLASSROOM	BOARDROOM	U-SHAPE	BANQUET	CABARET	COCKTAIL
Concert Room	200	70	40	40	120	105	250
Terrace Room	40	25	20	25	50	35	80
Redwood One	160	70	40	80	100	70	180
Redwood Two	80	30	30	30	50	35	100
Redwood Centre	340	110	70	65	200	140	340
Boardroom	20	12	12	10	10	7	30

Number of meeting spaces 6



LOCATION



MORE INFO

# DISTINCTION ROTORUA HOTEL

133 |

Distinction Rotorua Hotel & Conference Centre is just a short drive away from Rotorua's top activities and attractions and boasts a gorgeous garden setting, where your delegates can relax by the pool for morning/afternoon tea or lunch.

With six separate on-site conference rooms, the purpose-built Fenton Conference Centre can cater for up to 500 guests. Rooms include the grand ballroom, Kauri Function Room, private Boardroom, Cards Lounge, breakout areas, outdoor areas and a large Exhibition Foyer. Distinction also offers plenty of FREE off-street car parking and complimentary, secure mountain bike storage.

Distinction Rotorua also presents a full range of superior accommodation options, each offering a modern ensuite bathroom, SKY TV with sports channels, complimentary refreshments and FREE unlimited WiFi. Stylish hotel suites boast separate bedrooms, generous living and dining areas and balconies with views. Enjoy great facilities, top-quality hotel accommodation, and a daily delegate rate, including venue hire, morning and afternoon teas and lunch.

- Distinction Rotorua Hotel has the largest hotel-based conference centre in Rotorua.
- Distinction Rotorua Hotel has been awarded Silver under the Sustainable Tourism Business criteria by Qualmark.



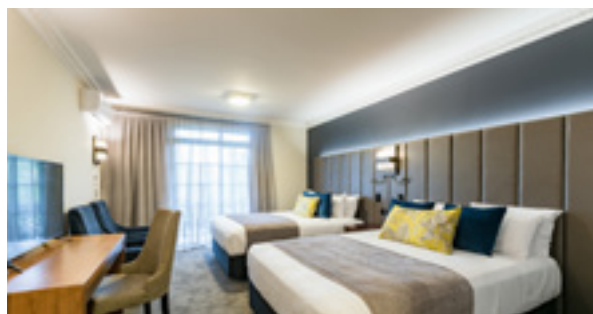
VIRTUAL TOUR



LOCATION



MORE INFO






Venue Information:	THEATRE	CLASSROOM	BOARDROOM	U-SHAPE	BANQUET	CABARET	COCKTAIL
Fenton Ballroom	500	250	-	-	320	-	500
Fenton Foyer	-	-	-	-	-	-	350
Miro Room	130	80	40	40	100	-	180
Rimu Room	130	80	40	40	100	-	180
Tawa Room	130	80	40	40	100	-	180
Kauri Room	150	90	50	50	100	-	200
Cards Lounge	40	30	30	25	40	-	60
Boardroom	-	-	8	-	-	-	-
Kowhai Restaurant	-	-	-	-	180	-	-
Pavilion Restaurant	-	-	-	-	40	-	-
Mr Yakitori	-	-	-	-	24	-	-
Courtyard	-	-	-	-	40	-	60
<b>Number of meeting spaces</b>	<b>8</b>						



## IBIS ROTORUA

 145 | 

Just a short stroll from the shores of beautiful Lake Rotorua, ibis Rotorua is a fantastic accommodation option for guests seeking affordable comfort in the heart of New Zealand's geothermal resort town, and just 15 minutes from the airport. Conveniently positioned within the heart of Rotorua, you'll have easy access to local attractions, including Te Puia's geothermal valley and cultural experience, Skyline Luge as well as rejuvenating day spa experiences.

-  Guests have access to all Novotel facilities.
-  Secure gated car parking.
-  Located near the lakefront.



Meeting spaces are not available at this venue



LOCATION



MORE INFO

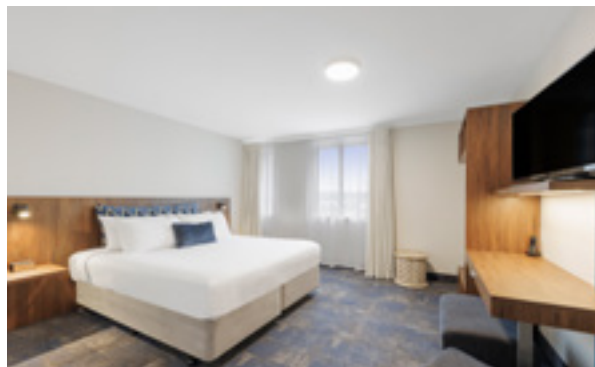
# JETPARK HOTEL ROTORUA

63 |

Located a short drive to Rotorua town centre, experience authentic New Zealand hospitality and premium, 4-star accommodation at JetPark Hotel Rotorua. Providing an eco-friendly stay, JetPark offers 63 fully refurbished guest rooms, seamlessly blending modern amenities with a cozy ambiance.

Catering to the diverse needs of every guest, JetPark provides a range of rooms, from family suites to pet-friendly options and rooms tailored to the business traveller. Whether your visit is for leisure, business, or adventure, let JetPark Rotorua be the starting point for your journey.

- Central location close to Rotorua city centre and attractions with family friendly onsite amenities including an outdoor pool and spa, kids play area, and BBQ facilities. Kids under 12 stay free with an adult.
- Receive benefits when you book direct including free continental buffet breakfast, a drink at Te Puru Café & Bar, free room upgrade, and late checkout at 12pm.
- A small meeting room onsite is available, featuring plenty of natural light, an outdoor breakout space, ceiling-mounted data projector and screen, self-controlled air-conditioning, and unlimited high-speed Wi-Fi.



Venue Information:	THEATRE	CLASSROOM	BOARDROOM	U-SHAPE	BANQUET	CABARET	COCKTAIL
The Matthews Room	30	12	16	15	-	-	-
<b>Number of meeting spaces</b>	<b>1</b>						



LOCATION



MORE INFO

# MILLENNIUM HOTEL ROTORUA

227 |

Centrally located, the Millennium Hotel Rotorua is ideal as an international conference venue and base from which to enjoy the many superb activities available in this diverse region. Designed to pamper, this deluxe hotel offers luxury accommodation and warm, hospitable service.

Millennium Hotel Rotorua is endorsed with a Qualmark 4 Plus Star and Gold rating for its sustainability practices. The hotel is also a member of the Rotorua Sustainable Tourism Charter.

- With 227 accommodation rooms, Millennium can hold small and large groups.
- Seven conference spaces of different sizes to cater for all conference needs.
- 15-metre thermally heated all-weather swimming pool with two hot pools.



Venue Information:	THEATRE	CLASSROOM	BOARDROOM	U-SHAPE	BANQUET	CABARET	COCKTAIL
Mokoia	350	160	-	50	160	128	350
Millennium 1	100	48	30	30	60	40	80
Millennium 2	40	20	18	16	20	16	25
Millennium 3	30	20	18	16	20	16	25
Millennium 4	80	40	25	30	50	42	80
Millennium 5	120	60	35	35	80	40	120
Boardroom	-	-	10	-	-	-	-
Poolside	-	-	-	-	200	-	400

Number of meeting spaces 7



LOCATION






MORE INFO



# NOVOTEL ROTORUA LAKESIDE

 199 | 

Check into 4.5-star comfort with the lake at your doorstep at Novotel Rotorua Lakeside Hotel. Rejuvenate in the spa's natural geothermal mineral pools and experience a delicious dinner in Atlas Restaurant. Then retire to your room - a calm haven with earthy colours, wood furniture and picture windows and soak in the spectacular scenery at Novotel.

-  Novotel's location offers the best lake views and ample parking.
-  11 different meeting spaces including optional indoor-outdoor experiences for catering within garden areas.
-  Private geothermal pools to relax in after a productive day in meetings.



Venue Information: See over page



VIRTUAL TOUR



LOCATION



MORE INFO



# NOVOTEL ROTORUA LAKESIDE

Venue Information:	THEATRE	CLASSROOM	BOARDROOM	U-SHAPE	BANQUET	CABARET	COCKTAIL
Batten 1	80	40	-	30	100	80	150
Batten 2	170	72	30	48	120	96	200
Rutherford	260	108	-	55	200	160	260
Mansfield	60	27	20	24	50	40	65
Blake Room	-	-	10	-	-	-	-
Exec. Boardroom	-	-	10	-	-	-	-
Seddon	40	15	17	17	40	32	50
Hillary	40	15	17	17	40	32	50
Stafford	40	15	17	17	40	32	50
Dodd	40	15	17	17	40	32	50
Matariki	100	72	30	40	140	112	200
Matariki Gardens	80				50		80
<b>Combination Rooms</b>							
Batten 1&2	350	144	-	70	300	240	500
Stafford + Dodd	60	30	30	30	60	56	65
<b>Foyers &amp; Bars</b>							
Pre Function	-	-	-	-	-	-	200
<b>Number of meeting spaces</b>	<b>11</b>						



VIRTUAL TOUR



LOCATION



MORE INFO

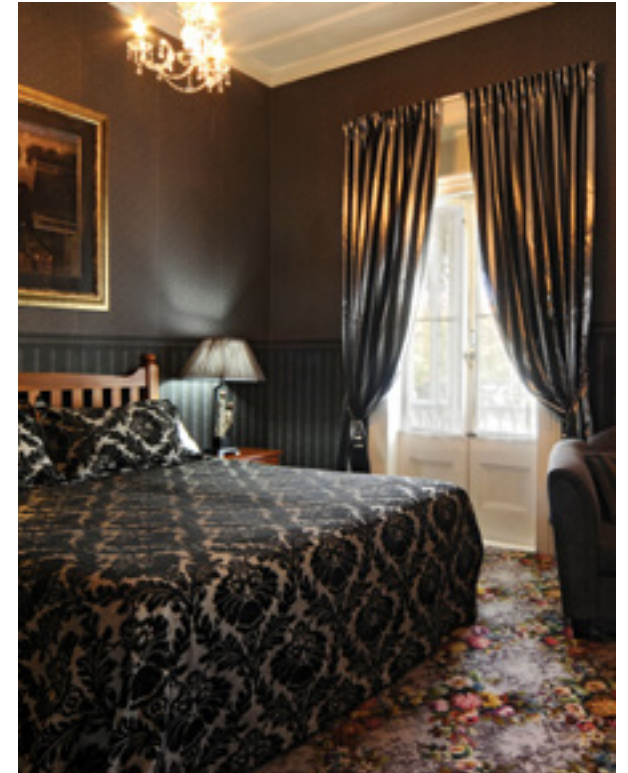
# PRINCE'S GATE HOTEL

50 |

Welcome to the Prince's Gate Hotel, where the best in New Zealand hospitality and comfort has been provided for more than 120 years.

Located in the heart of Rotorua, just a stone's throw away from the famous Government Gardens, lakeside and city centre, this stunning property offers a perfect retreat from which to explore Rotorua's wonderland of adventure and culture.

- Centrally located with ample free car parking and walking distance to major city locations.
- Tastefully designed rooms and venues provide a sense of luxury and boutique experience.
- Dedicated team provide personalised service to take your business conferences and events to the next level.



Venue Information:	THEATRE	CLASSROOM	BOARDROOM	U-SHAPE	BANQUET	CABARET	COCKTAIL
Monarch Hall	100	60	50	40	80	65	120
Monarch Library	30	20	20	20	20	15	40
Nellie Budd Room	90	50	40	40	80	65	95
Dukes	90	50	40	40	80-90	65-75	95
Arawa Boardroom	25	16	12	12	12	12	25
Courtyard	-	-	-	-	-	-	60

Number of meeting spaces 6



VIRTUAL TOUR



LOCATION



MORE INFO

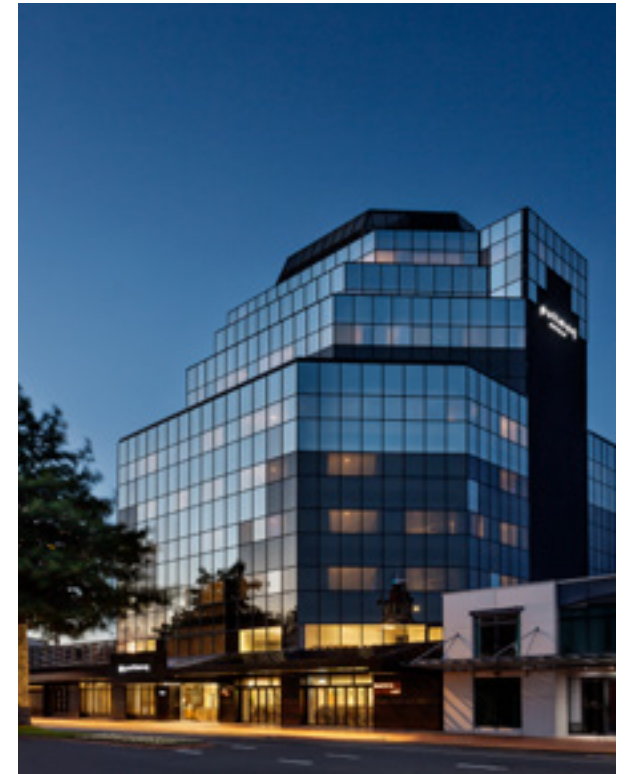


# PULLMAN ROTORUA

130 |

Pullman Rotorua is steps away from the lakefront, and boasts excellent meeting facilities in a city known for its adventure and team building activities. With 130 luxurious rooms and suites, the hotel has six versatile meeting spaces offering state-of-the-art technology, natural light, and dedicated service access.

- 174m<sup>2</sup> of dynamic meeting and event space
- Six private meeting spaces
- Prefunction area
- Up to 150 people theatre style
- Boardroom / private dining room
- State-of-the-art audio visual equipment
- Innovative and bespoke catering
- Dedicated event specialists



Venue Information: See over page



VIRTUAL TOUR



LOCATION



MORE INFO



## PULLMAN ROTORUA

Venue Information:	THEATRE	CLASSROOM	BOARDROOM	U-SHAPE	BANQUET	CABARET	COCKTAIL
Te Taumata	150	80	-	-	112	84	150
Whakarewarewa/ Waiotapu	70	26	20	20	40	30	70
Waimangu/Kuirau	70	36	20	20	64	48	80
Whakarewarewa	35	18	16	16	32	24	40
Waiotapu	35	18	16	16	32	24	40
Waimangu	35	18	16	16	32	24	40
Kuirau	35	18	16	16	32	24	40
Pukaki	50	16	12	16	32	24	50
Arawa	-	-	16	-	-	-	-
Mokoia	70	40	-	-	48	36	70
<b>Number of meeting spaces</b>	<b>8</b>						



VIRTUAL TOUR



LOCATION



MORE INFO



## QUEST ROTORUA CENTRAL



35



Located in the heart of Rotorua, Quest Rotorua Central offers self-contained apartment hotel living. Quest is a short walk to Rotorua's shopping and restaurant precinct, city parks and conference venues. Ideal accommodation for business and leisure visitors alike.

Apartments offer an open-plan environment to unwind and relax while providing full kitchen and laundry facilities to give you a home away from home. Executive Apartments boast a private balcony and relaxing hot tub, perfect to soak in at the end of the day.

- Fully self-contained apartment hotel ideal for business, leisure and family visitors.
- Executive Apartments with private hot tubs.
- Central city location close to all things Rotorua.



Meeting spaces are not available at this venue



LOCATION



MORE INFO



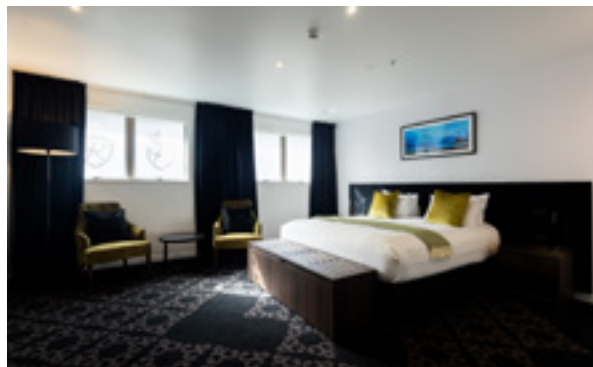
# REGENT OF ROTORUA

47 |

Step into a world of elegance and refinement at Regent of Rotorua, where every detail has been curated to ensure an exceptional stay. From the moment you arrive, our warm and attentive staff provide personalised service designed to exceed expectations.

Accommodation ranges from cosy Cutie Rooms, ideal for solo travellers or couples, to Premium and Superior Rooms, one-bedroom Boutique Suites, and spacious multi-bedroom options including Two-Bedroom Rooms and a 3-Bedroom loft for families or groups. Each room is thoughtfully designed to blend modern décor with luxurious comfort, featuring luxe linens, modern furnishings, complimentary Wi-Fi, and elegantly appointed bathrooms.

- The hotel features a heated outdoor swimming pool and a private indoor geothermal mineral pool, providing serene spaces for relaxation. Adventure seekers can take advantage of secure mountain bike storage and cleaning facilities.
- Savour the flavours of New Zealand at The Regent Room, offering breakfast, lunch, high tea, tapas, à-la-carte dining, and indulgent degustation experiences seven nights a week, with plant-based options to suit every palate.
- With 47 elegantly appointed rooms and suites, Regent of Rotorua is a sanctuary of sophistication and tranquillity in the heart of the city, offering an unforgettable stay for couples, families, and travellers alike.



Venue Information:	THEATRE	CLASSROOM	BOARDROOM	U-SHAPE	BANQUET	CABARET	COCKTAIL
Club Lounge	20	16	12	-	-	-	20
Board Room	40	20	20	20	20	-	30
Regent Room	80	60	-	40	80	-	100
Poolside	-	-	-	-	50	-	50

Number of meeting spaces 4



VIRTUAL TOUR



LOCATION



MORE INFO

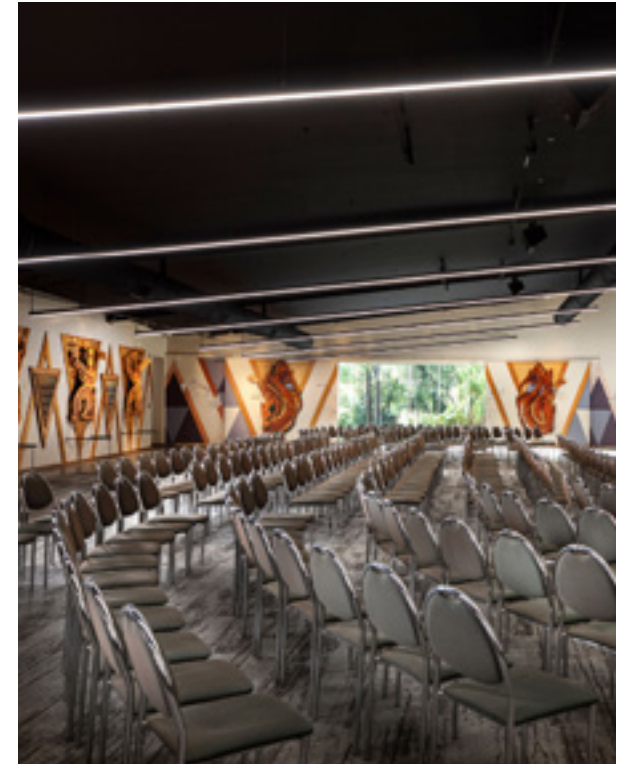
# RYDGES ROTORUA

203 |

In close proximity to the edge of Whakarewarewa forest, overlooking the glistening waters of the Whakarewarewa Thermal Valley and surrounded by nature's best work, people come to Rydges Rotorua from all over.

From intimate to elaborate, work to play, and day to night, Rydges has a selection of flexible spaces that will put the ease back into planning an event to remember. A large conference venue can comfortably host up to 500 people theatre style, while our small meeting room is the perfect place to crunch the numbers and get down to business with your colleagues.

- The spacious venue of Pohutu Conference Centre comfortably hosts up to 500 guests theatre style, set in natural light and carved artwork.
- The location, adjacent to Whakarewarewa Geothermal Valley and Whakarewarewa Forest, makes it ideal for cultural or teambuilding experiences.
- Free onsite parking.



Venue Information:	THEATRE	CLASSROOM	BOARDROOM	U-SHAPE	BANQUET	CABARET	COCKTAIL
Pohutu Conference Centre	500	250	-	-	300	252	750
Te Puna Aroha	300	-	-	80	160	144	300
Totara	150	-	40	50	100	81	200
Kauri	70	-	30	30	50	45	110
Kowhai	50	-	30	20	40	45	60
Manuka Boardroom	25	-	10	-	-	-	-
Rimu Boardroom	-	-	12	-	-	-	-
Hotel Lobby	-	-	-	-	-	-	300
<b>Number of meeting spaces</b>	<b>7</b>						



LOCATION



MORE INFO

# SUDIMA LAKE ROTORUA

242 |

At Sudima Lake Rotorua you can't get any closer to the lake, as the hotel sits right on the shore offering breath-taking vistas across the water. The hotel is just a short stroll from Rotorua's vibrant city centre and the Energy Events Centre.

This well-appointed home-away-from-home has all the facilities and features you'd expect from a Qualmark 4-star property. With one of the largest capacities of accommodation rooms in town, four function spaces, a kidzone and a thermal heated pool, Sudima Lake Rotorua offers it all.

- Walking distance to the Rotorua Energy Events Centre.
- One of the largest hotels in the region with 242 accommodation rooms.
- Four conference facilities catering for up to 200 theatre or 400 cocktail style.



Venue Information:	THEATRE	CLASSROOM	BOARDROOM	U-SHAPE	BANQUET	CABARET	COCKTAIL
Rotoiti	260	120	-	-	140	180	400
Tikitapu	45	20	20	20	-	32	-
Rotomahana	80	40	20	20	60	-	-
Okataina	-	-	18	-	-	-	-
<b>Number of meeting spaces</b>	<b>4</b>						



LOCATION



MORE INFO



# NGĀ RŌTI HĀNEANEA | LUXURY LODGES

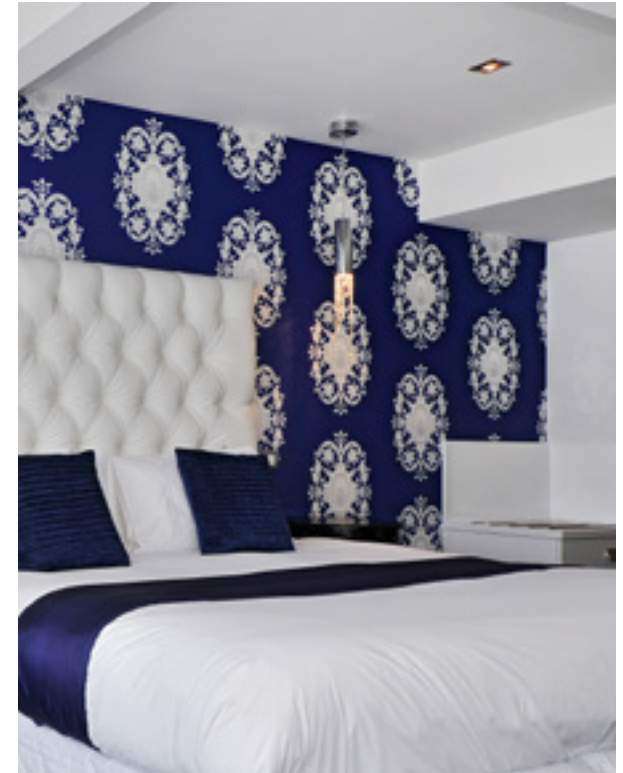
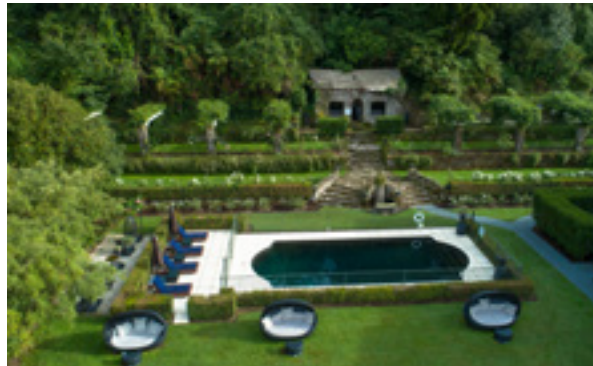


# BLACK SWAN LAKESIDE BOUTIQUE HOTEL

10

Black Swan is a luxury lakeside hotel only 10 minutes from central Rotorua. It is the ideal space for intimate corporate retreats with all the necessities for successful meetings, whilst also providing expansive grounds for team-building activities and recouping.

- Centrally located only 10 minutes' drive to the city centre.
- Tastefully designed boutique rooms provide a sense of luxury, with expansive grounds for team-building activities and recouping.
- A dedicated team provides personalised service to take your business conferences and events to the next level.



Venue Information:	THEATRE	CLASSROOM	BOARDROOM	U-SHAPE	BANQUET	CABARET	COCKTAIL
Restaurant	40	25	20	20	20	20	50
Conservatory	30	10	15	15	15	15	40
<b>Number of meeting spaces</b>	<b>2</b>						



LOCATION



MORE INFO

# HANA LODGE BOUTIQUE HOTEL

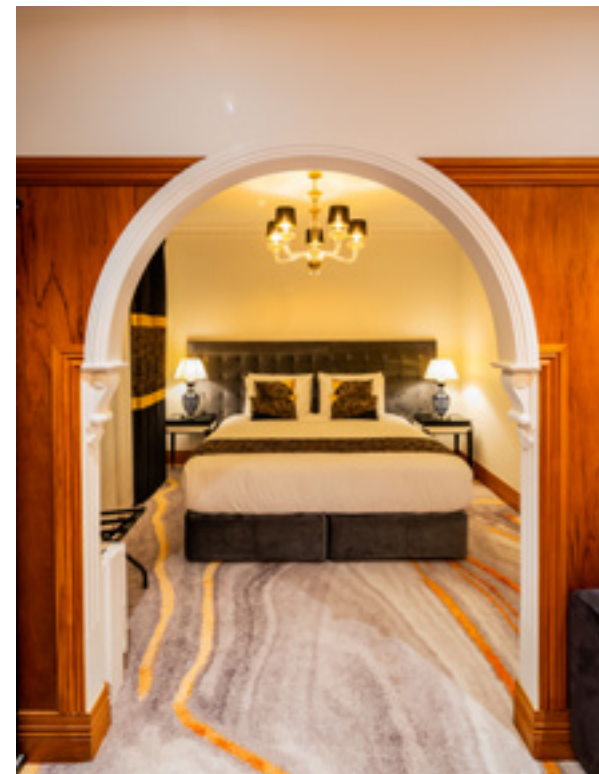
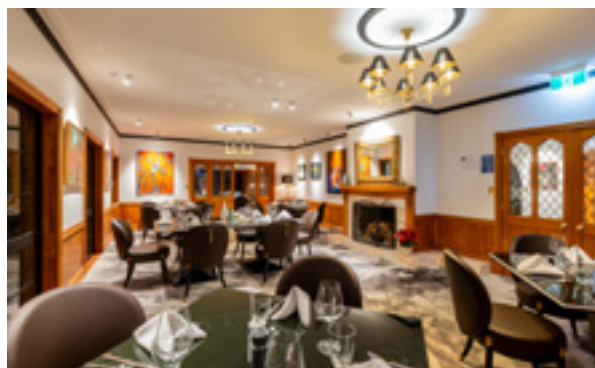
12

Hana Lodge is a luxury lodge with lake views, only 15 minutes from central Rotorua.

The Lodge has 12 luxury newly renovated rooms with a mix of classic Kiwi country style, and modernized facilities.

The Lodge is located on 50 acres of land, which contains many land sculptures and animals. It has various activities available onsite, which is ideal for a family or group retreat.

- 50-acre site with many iconic land sculptures, various animals and the largest bamboo forest in the Southern Hemisphere
- Mixture of Kiwi lifestyle with modernized facilities within the rooms
- Luxury fine-dining restaurant with a thoughtfully-designed 4-course menu, where you can enjoy the lake view whilst dining



Venue Information:	THEATRE	CLASSROOM	BOARDROOM	U-SHAPE	BANQUET	CABARET	COCKTAIL
Restaurant	40	25	25	25	25	25	25
Bar	20	15	15	15	15	15	15
Private Dining Room	-	-	-	-	4	-	-
<b>Number of meeting spaces</b>	<b>3</b>						



LOCATION



MORE INFO

# ON THE POINT - LAKE ROTORUA

**11**

Surrounded by the sparkling waters of Lake Rotorua, On the Point is the perfect venue for your intimate corporate incentive event, elegant wedding, product launch or meeting.

On the Point is a destination in itself. The 1930's mansion is steeped in local history and surrounded by luscious green gardens, manicured lawns and impressive panoramic views. Ideally located just minutes from the heart of Rotorua and right on the shore of Lake Rotorua, this luxurious lodge delivers a relaxed and tranquil atmosphere.

- Minutes drive from the Rotorua city centre.
- Ideal venue for corporate incentives or an exclusive buyout.
- Unique spaces include an enchanting stone chapel with expansive glass windows providing views over Lake Rotorua and Mokoia Island. The chapel can be used for private lunches alongside the conservatory, which is also a perfect venue for meetings, private dining and events.
- On The Point - Lake Rotorua is a Qualmark Gold property.



Venue Information:	THEATRE	CLASSROOM	BOARDROOM	U-SHAPE	BANQUET	CABARET	COCKTAIL
The Dining Room	-	-	10	-	14	-	14
Chapel	50	-	15	-	40	-	70
The Conservatory	50	-	24	-	70	-	100
<b>Number of meeting spaces</b>	<b>3</b>						



LOCATION



MORE INFO



## SOLITAIRE LODGE



Solitaire Lodge offers secluded luxury accommodation and attentive hosting from a spectacular lakeside location. Styled with comfort in mind, all nine luxurious suites feature panoramic views over Lake Tarawera's still, deep waters. Renowned for its fine dining, Solitaire Lodge serves contemporary New Zealand cuisine prepared with fresh local produce and complemented by superb wines from selected New Zealand vineyards. Feeling adventurous? Embark on a scenic helicopter flight over the surrounding volcanic landscape, hike to 65-meter waterfalls or explore tranquil waters in a kayak or motorised dinghy.

- An idyllic location in both summer and winter, the grounds boast unobstructed panoramic views and the nearby hot waters provide year-round natural bathing.
- The Lodge offers nine luxurious Suites, lavish king beds, comfortable chairs for lounging, freestanding baths with spectacular lake views and private balconies.
- The talented chefs create daily changing fare, prepared with fresh local ingredients and complemented by a variety of superb wines from selected New Zealand vineyards.



LOCATION



MORE INFO

# TREETOPS LODGE & ESTATE

Sister property to Kinloch Manor & Villas

**14** 14 total - 13 one bedroom guestrooms and villas and 1 x 3 bedroom cottage

Nestled in 2,500 acres of 800-year old native forest, award-winning Treetops Lodge & Estate is a sanctuary of breath-taking terrain, offering outstanding gourmet fare and the ultimate in world-class accommodation for up to 32 guests. Located in the Māori heartland and trout-fishing capital of the world, the Lodge's elegant, ecology-inspired architectural style echoes the natural beauty and simplicity of the great outdoors. Treetops offers seven streams, on-site trout fishing, four lakes and over 70km of adventure trails, plus experiences that include horse riding, hunting, clay shooting, multiple treks to spectacular waterfalls, Māori food trails, and a 4WD experience. Additionally, discover a dedicated spa, outdoor jacuzzi hot tubs, our sister lodge Kinloch Manor, and the internationally recognised Jack Nicklaus Signature Golf Course at Lake Taupō.

- Our dining philosophy incorporates estate-reared and grown organic produce with 21st century twists. World-class game and trout are accompanied by 100% pesticide-free and organic heritage and indigenous varieties of vegetables.
- For meeting or incentives, embark on a journey of exploration and discover the wonders of 2,500 acres of 800-year-old virgin private forest and an abundance of onsite activities.
- Enjoy modern technology in the dedicated private Treetops Boardroom, which hosts up to 24 delegates. Private breakout rooms and fireside chats are available for exclusive use or small groups.



Venue Information:	THEATRE	CLASSROOM	BOARDROOM	U-SHAPE	BANQUET	CABARET	COCKTAIL
Conference Room	31	24	14	-	-	-	50
Dining Room	-	-	-	-	40	-	-
Bar	-	-	-	-	60	-	-
Great Hall	-	-	-	-	-	-	60
<b>Number of meeting spaces</b>	One dedicated Boardroom and three completely private meeting spaces for breakouts (Library with fireplace, Games Room with Day Room)						



LOCATION



MORE INFO

A photograph of a formal event in a large hall. The stage is illuminated with purple and white spotlights, and a person in a shimmering dress is performing. The audience is seated at round tables with white tablecloths and glassware. Two large, rectangular panels of warm white string lights hang from the ceiling. The overall atmosphere is elegant and festive.

# NGĀ RATONGA O IA TE PĀTANGA | EVENT SERVICES



# ĀIO MEDIA LIMITED



PHOTO/VIDEO



- Full-service photography and videography business creating high-quality digital content across New Zealand. And as a bonus? They're proudly Māori-owned and operated.
- Known and respected in the industry for their creativity and high-end visuals, trusted by some of the biggest names in the music, entertainment, and corporate industries.
- Certified Part 102 drone operators, prioritising the latest technology in equipment and editing. Āio Media are known for their professionalism, ability to connect, and creating a comfortable, collaborative experience on every project.



MORE INFO

# ALL ROUND ENTERTAINMENT



ENTERTAINMENT



- 40+ years of expertise: We have decades of experience in the entertainment industry, including a local radio DJ from The Heat FM 99.1, ensuring a level of skill and professionalism that sets us apart.
- Versatile Musical Range - Enjoy a diverse repertoire spanning retro hits to the latest chart-toppers, guaranteeing a customized and engaging musical experience for all preferences.
- Renowned Collaborations - Our DJ's, including a presence from The Heat FM 99.1, have shared stages with local and international music icons, bringing a level of prestige and expertise to every performance.



MORE INFO

## ALL ROUND ENTERTAINMENT SECURITY



- Trained and licensed security personnel for events, festivals, bars and nightclubs.
- Proactive crowd management strategies to ensure a safe and enjoyable experience for all guests.
- Thorough risk assessments and tailored security plans for each engagement.
- Collaborative approach with event organisers and venue management for seamless execution.



MORE INFO

## ARONU I ARTS FESTIVAL



SPEAKER/MC



ENTERTAINMENT



- Aronui Arts Festival is the leading indigenous arts specialists in Rotorua, programming and executing the delivery of live theatre, exhibitions, traditional arts activations and drone shows for corporate and community events.
- Aronui delivered the first Māori drone show in Aotearoa New Zealand, with a preview held at MEETINGS 2024 for 350 VIP conference attendees. Aronui can stage the same show at your event, or help you build a custom show.
- Aronui was a triple nominee, winning the Creative Arts & Design Award at the 2024 Rotorua Business Excellence Awards - delivering authentic Māori arts experiences, shows and live entertainment that showcases the unique culture and geothermal wonderland of Rotorua.



MORE INFO

## ATTEND NEW ZEALAND



EVENT  
MANAGEMENT



- All-Encompassing Destination Management: Offering unforgettable experiences through local insights and strong connections. Every aspect is finely tuned, from selecting premium venues to arranging bespoke transport, enriching your Kiwi adventure.
- Group Incentive Itineraries: AttendNZ crafts custom group incentive itineraries that blend New Zealand's breathtaking landscapes with vibrant culture. Our tailored adventures are designed to motivate, celebrate, and create unforgettable memories.
- Bespoke Experiences for Every Event: Our events, from incentive trips to grand conferences, are enhanced by top-tier amenities, ensuring a seamless, expectation-exceeding experience with elegance and precision.



MORE INFO

## BLACK LABEL BARBECUE



CATERING



- American style low and slow barbecue catering for events.
- Rotorua's largest "Texas built" mobile smoker, available at a variety of venues around Rotorua.
- Owned by Season One Winners of "Cooks on Fire" TV show.



MORE INFO

## BOP EVENT + EXPO HIRE



- Bay of Plenty Event + Expo Hire is your proudly local exhibition and tradeshow hire company with everything you need for events and exhibitions ..... right here in The Bay
- Our experienced team can assist with computer aided design, concepts, logistics, shell scheme, installation and pack out. Our focus is service, service, service.
- We have shell scheme, furniture, flooring, signage & branding, AV, lighting and electrical and more ..... talk to us.



MORE INFO

## COUNT ME IN



- Count Me In has been the “go to” classic hits party band in Rotorua for more than two decades.
- Consisting of Kelly Makiha on lead vocals and guitar, Daryl Cogger on keyboard/bass and vocals, Richard Anaru on lead guitar and vocals and Noel Lamberton on drums, the foursome have clocked up thousands of gigs between them to collectively bring a wealth of experience second to none.
- Count Me In always brings life to conferences and private events, and promises they can deliver from quiet background music to dance sets to get everyone in the party mood.



MORE INFO



## DJ PETE



- Pete Makiha has been the sought-after DJ for conferences and private functions by major hotels and key event organisers in Rotorua for several years.
- He is a versatile and diligent DJ with incredible music knowledge and the ability to read the crowd and keep all age groups happy.
- He is a trusted DJ who will go the extra mile to make sure your event is a success.



MORE INFO

## EVENT IMPRESSIONS



- Event styling and decor solutions: engage with our creative team to present a custom design that ticks all your boxes, meeting your event goals and brief.
- Event hire and speciality event items: we offer a full complement of centrepieces, feature bars, stylish leaners, lounge items such as lamps, couches, cushions, throws, coffee tables, ottomans, cubes, bean bags. We also supply lighting and everything you need to create the right ambiance whether intimate gatherings or grand social zones. We've found your next favourite trend.
- Event linen and drapes: we have table linens, chair-covers, runners and sashes. There's something for every event, from fun colours, to corporate classics, or dazzling awards ceremonies. We also have a huge array of drapery options for any space including large arenas.



MORE INFO

## EXHIBITION HIRE SERVICES



- Coast Group, a one-stop shop family of companies with a diverse range of services dedicated to providing excellence across all facets of the events industry.
- Coast Group strive to provide effective solutions for all your display needs. From small 1.8m x 3m booth designs, to an entire show, trade show or conference. This can include walling, lighting and power, hire furniture, custom stands, marquees, carpet and flooring, signage and branding.
- Coast Group is an AMOTAI registered business; they pride themselves on dedication to getting the job done quickly and professionally and are consistently commended on the level of service and high-quality products.



MORE INFO

## EZI CAR RENTAL



- With 24 key airport and city branch locations New Zealand wide, collecting a rental car is fast and simple with Ezi - getting you and your delegates on the road quicker.
- Flexible booking options include book now and pay on collection, and no cancellation fees, allowing you to adjust your travel plans right up until you arrive to collect your rental vehicle.
- A fleet that offers the latest model vehicles, ranging from compacts, hybrids, SUVs and utes. With the highest safety ratings, 24/7 breakdown cover and unlimited kilometres, all your travel needs are covered.

MORE INFO



# GROW & GRILL



- Corporate Cook-Off Challenges. Barbecue Classes & Demonstrations including Growing & Grilling your own food at home.
- Speaking slots on our journey.
- Season One Winners of “Cooks on Fire” TV show and owners of Black Label Barbecue – an American style low and slow catering company servicing a range of venues in Rotorua.

MORE INFO

# INTHEFRAME



- Rotorua born and bred, Thomas was raised in the corporate conference industry, allowing him to have an extensive understanding of what’s required to not only operate as a professional cameraperson but for the event as a whole.
- Thomas offers a beautiful balance between being able to bring energy when necessary and blending into the background when required.
- As a lover of the outdoors and an avid mountain biker, Thomas is able to shoot extra-curricular conference activities with ease.



MORE INFO



# JOANNA JOHNSON ARTISTRY



- Makeup Artist, Spray Tan Artist, Brow and Lash Artist – Joanna has all your event beauty needs covered. Offering a relaxing atmosphere at her private studio based in Springfield, Rotorua, or mobile makeup services at your accommodation or event.
- Joanna has notable industry experience in the areas of stage, print media, and television. She has also provided makeup services within a number of professional industries including corporate functions, portrait photography, modelling agencies, beauty contests and dance studios.
- With over 15 years industry experience as a Makeup Artist, Joanna is well versed in corrective makeup techniques which enables her to disguise even the trickiest beauty challenges, present the ever-desired facial symmetry, and enhance her client's best features.



MORE INFO

# KĀNUKA BOUTIQUE FLORIST



- Kānuka Boutique Florist is your local florist based here in Rotorua. Our lovely and experienced Rotorua florists are here to create on-trend and unique floral arrangements and displays for our valued customers. We are here to guide and help you to choose beautiful flowers for any occasion including corporate bouquets and event centrepieces.
- We also offer private events in our floral workshop or at your venue. Learn how to make your own terrarium, floral posy in a vase, floral hair crown, dried floral wreath or Christmas wreath. Enjoy being creative and inspired while learning a new skill that you can use again at home.



MORE INFO



# KELLY MAKIHA



- Kelly Makiha is a sought-after solo performer who has provided either background or dance music for hundreds of conferences and private functions.
- Her versatile voice means she can cater to all musical tastes, be it a quiet dinner or raging dance party.
- She has been Rotorua’s “go to” performer for all major events and functions for several years and has an incredible work ethic to ensure you will not be disappointed.



MORE INFO

# LOCAL GECKO PRODUCTIONS LTD



- Specialists in broadcasting, videography, photography, live streaming, drone operations, and media design for large and small events, Local Gecko Productions captures your event that is high quality and professional.
- Specialising in short form video for your project, high-quality produced videos. Quality sporting photography specialists and imagery that will last a lifetime.
- We creat live stream packages, filming and capturing for a live strea audience, droning. As we are capturing the event in its entirety and capturing it live We have invested in AV for smaller events to support with the livestreams and customer vision.



MORE INFO



# MEAD NORTON VISUAL STORYTELLER



PHOTO/VIDEO



- Award-winning photographer and videographer specialising in documentary style storytelling imagery.



MORE INFO



CATERING

# MONTANA FOOD AND EVENTS



- Over 20 years of proven expertise delivering seamless, high-quality catering and event services, trusted by leading venues and clients across the Waikato & Bay of Plenty regions.
- Creative, chef-led menus using fresh, seasonal, and locally sourced ingredients, tailored to suit your event style, budget, and guests.
- A dedicated team that supports you from planning to pack-down, ensuring stress-free delivery, flawless service, and unforgettable guest experiences.



MORE INFO



# MOUNTAIN JADE



- Great opportunity to supply guests with a unique, local gift.
- Meet local artists at work and view our gallery of hand-carved art.
- Book a free group tour to learn more about the history and significance of pounamu in New Zealand.



MORE INFO

# OUT HOUSE - VIDEO PRODUCTION



- Out House is a full-service video production company with 10 years' experience across tourism, events, promotional, documentary and sport.
- High-end 4K cinematic equipment including Sony FX6 & A7S + DJI Mavic 3 for licenced drone and aerals.
- Edit studio based in Rotorua + FTP server for remote viewing.



MORE INFO

## READY2ROLL SHUTTLES



TRANSPORT



- Locally owned business providing excellent customer service - join as a customer and leave as a friend.
- We cater to all forms of transport; whether it's corporate or private transport; talk to us to see what we can do for you.
- Airport transfers (both international and domestic - Rotorua and Hamilton), corporate events, concert transport, cruise ship transfers, day tours, shopping trips.



MORE INFO

## TEAM UP EVENTS



TEAM BUILDING



- At Team Up Events we deliver world class corporate team experiences that challenge and inspire participants to work together so that they can achieve their goals.
- Whether your priority is to energise, motivate, or strengthen your team, our programs are proven to realise key benefits for your organisation and deliver value beyond "just fun".
- With an extensive range of indoor, outdoor, evening, and charity based team events suitable for conferences, team away days, gala dinners, and much more, it's time to Team Up!



MORE INFO

## TERRACE CATERING



- Terrace Catering is a Rotorua based food & beverage company from the team behind the award-winning Eastwood Cafe, Terrace Kitchen & Terrace Airside also known as the collective - Plenty Group. We specialise in event catering across the Bay of Plenty.
- Our menus are constantly evolving to reflect trends, changing seasons and our passion for all things food. Our talented chefs work with the finest seasonal, sustainable, and local ingredients to create menus that are exactly right for your occasion.
- Let's talk about your event, discuss a menu and organise a venue. We use our knowledge and culinary skills to create menus as unique as each special occasion, serviced by our very own hand-picked professionals.



MORE INFO

## THE EVENT GIRL



- Creativity: We believe extraordinary events stem from extraordinary ideas. Creativity drives our ability to craft bespoke, unforgettable experiences, tailored to our clients unique visions.
- Mastery: We bring a level of expertise and refinement to every event, ensuring each detail reflects our commitment to perfecting the art of extraordinary celebrations.
- Connection: We value meaningful relationships, working closely with our clients to understand their needs and create events that forge lasting memories and connections.



MORE INFO



# THE FACE OF NEW ZEALAND



SPEAKER/MC



- “Inspirational”, “Awesome”, “One of the most powerful experiences of my life”, “Highly memorable and energetic” are all descriptions of Ngahihi o te ra Bidois.
- Based in Rotorua, his name Ngahihi o te ra means the rays of the sun. He is a Māori tribal leader, author, professional director and an award-winning international professional keynote speaker.
- Ngahihi holds a business marketing degree, a master’s degree in education, and a certificate in company direction. Book him now through his website.



MORE INFO

# THE PRODUCTION AGENCY



AUDIO/VISUAL



ENTERTAINMENT



- Audio Visual Solutions | Entertainment Specialists
- There’s a reason why some of New Zealand’s most influential brands and highest profile events choose TPA to create unforgettable experiences for their audiences: We think outside the ordinary.
- TPA is an audio visual company combined with top international and local talent. Along with our own high performing audio visual solutions and the creative vision of leading industry minds, TPA creates bespoke events that speak volumes for your brand.



MORE INFO



# TOHU EXPERIENCES



- Customizable activity options means we can cater for groups both large and small. Our group of companies includes activity operations and we have strong relationships with many other operators around New Zealand, allowing us to provide total activity solutions for you.
- Tohu Experiences has been in operation for 30 years and boasts extensive knowledge of New Zealand. We specialise in central North Island tourism and events sectors, operating small boutique luxury options right through to New Zealand major events attracting tens of thousands of visitors.
- We are an event management company as well as transport and activity provider. This means we know what event organisers and PCOs need. We can provide as little or as much support as you require.



MORE INFO

# TOWN AND COUNTRY TOURING



- Town & Country Touring can provide full transport for your conference group from the minute they arrive at the airport, for the duration of your conference or incentive event.
- With many years' experience in New Zealand's tourism industry, Paul and Jane can answer any questions your group may have about the area, and know their market.
- They will provide excellent, professional customer service, and you can rest assured that your group's transport has been left in capable hands.



MORE INFO

## VIDCOM NEW ZEALAND LIMITED



AUDIO/VISUAL



- Leading provider of audio-visual equipment and services for conferences, awards dinners and special events nationwide.
- Specialists in hybrid; virtual events allowing clients to view or present from anywhere. Bonded internet solutions also allow for robust and stable streaming connectivity.
- Four offices across New Zealand including three studios allow Vidcom to support customers anywhere in the country. Regular investment into equipment and staff has resulted in a wide offering of tech and experienced staff to support clients.



MORE INFO

## VISTAMAX



AUDIO/VISUAL



- Vistamax is an audio visual company based in Rotorua.
- Vistamax provides the very best in LED screen technology, amazing sound, portable staging and creative lighting. Our team will work with the client from conception to completion in our unique seamless style.
- The company has been involved in major outdoor and indoor events including the Rugby World Cup, music concerts, Crankworx, AIMS Games and indoor screen displays at annual trade shows such as Meetings and TRENZ.



MORE INFO



- Corporate transport and private transfers to and from Tauranga, Rotorua, Hamilton or Auckland airports.
- Enjoy luxury transfers in the opulent fully air-conditioned mini coaches, stretch limousines and corporate cars, with complimentary bottled water.
- For larger groups, Xquizit offers luxury mini coaches as well as an airport limousine service.



MORE INFO



# NGĀ WHAREKAI ME NGĀ PĀPARAKĀUTA

# RESTAURANTS, CAFĒS AND BARS





71



# EAT STREAT



LOCATION



MORE INFO

Ever-changing fluorescent lighting and activity from hungry wanderers make this bustling inner-city dining precinct a go-to spot for locals and visitors alike. With 14 different eateries and bars to choose from, come here with plenty of time to wander your way from place to place. Burgers to beers, pizzas to pinot gris, Eat Streat is a haven for eating and drinking, and if you're wondering where everyone is on a Saturday night, this spot is your best guess.

# ROTORUA NIGHT MARKET



LOCATION



MORE INFO

Every Thursday from 5 to 8.30pm, the Kuirau Park hub comes alive with music, food, crafts, and plenty of people. Its a festive atmosphere thanks to the lively comings and goings of locals and visitors, attempting to fit in as many dumplings, doughnuts, burritos and burgers as possible. A variety of ethnic cuisines as well as local kai (food) are all on offer here, and while you're snacking you can pull up a chair to a shared table and be entertained by local musicians.

When you've filled up on food, it's definitely worth perusing the art, craft and clothing stalls too as some of the best local makers come here to sell their wares, and there's nothing quite like chatting to the artisan responsible for making your new mittens, beanie, soap or satchel.



## ANI'S GIN BAR & TAPAS



- ANI's Gin Bar and Tapas Restaurant is 100% Māori owned and whānau (family) operated, and named and opened in honour of the owners late mama, Annette (Ani) Sarah Vincent.
- The Kaupapa (purpose) of ANI's is to give customers a nostalgic and classy New Zealand dining experience through dishes served tapas style.
- ANI's dishes are cleverly mastered, using only New Zealand products from both land and sea.
- The social aspect of tapas relates to whakawhanaungatanga (the process of establishing relationships) in Māori Culture.



LOCATION



MORE INFO



SEATING

20



STANDING

30

PRIVATE  
DINING  
AVAILABLE

Yes

## ATTICUS FINCH



- Passionate, welcoming team serving distinctive local wine, craft beer and handcrafted cocktails with pride & accommodating hospitality.
- Carefully crafted share plates arrive in stages, offering balanced flavours and thoughtfully paced dining experience designed for connection and enjoyment.
- Located on Eat Street, enjoy vibrant indoor and covered patio seating that brings warmth, energy, and character to every visit.



LOCATION



MORE INFO



SEATING

130



STANDING

140

PRIVATE  
DINING  
AVAILABLE

Yes

## BREW CRAFT BEER PUB



- Home of Croucher Brewing's craft beer, Rotorua's only craft beer brewery boasting award winning beers and roasted coffee.
- 5-time winner of Rotorua's Most Outstanding Bar, 12 tap beers and ciders. Award winning wines and spirits.
- Craft food experience, locally sourced foods tailored to suit your requirements. Craft menus, set menus and group discounts available.



LOCATION



MORE INFO

 SEATING	 STANDING	PRIVATE DINING AVAILABLE
140	250	YES

## CAPERS CAFE + STORE



- Part of the Rotorua community for over 20 years, delivering classic Kiwi hospitality to visitors and locals.
- Breakfast, lunch and dinner menus available, along with a hearty selection of cabinet meals, world-famous salads and cakes.
- Serving fair-trade Organico Coffee along with an extensive Tea Menu from NZ producers Webster's Tea, Libertine Blends, and Noble & Sunday Tea Merchants.



 SEATING	 STANDING	PRIVATE DINING AVAILABLE
105	-	-

## EASTWOOD CAFÉ



- Eastwood Café is located in Whakarewarewa Forest at Scion Research in the award-winning, carbon zero building Te Whare Nui o Tuteata.
- Our wood-fired pizzas are a must-try! Watch them being made at the pizza bar in the Mediterranean style stone oven.
- Ideal venue for a relaxed dinner.



LOCATION



MORE INFO

 SEATING	 STANDING	PRIVATE DINING AVAILABLE
--	---	--------------------------------

140

250

YES

## EL MEXICANO ZAPATA CANTINA



- Authentic Mexican Flavours with a Local Twist  
Traditional Mexican dishes made with fresh, locally sourced ingredients, delivering bold, genuine flavours while staying true to authentic Mexican roots.
- Award-Winning Reputation  
Recognised with multiple hospitality and TripAdvisor awards from 2021 to 2023, plus stellar 5-star Google reviews showcasing top-tier food, service, and consistency.
- Diverse Menu and Fully Licensed Bar  
Features a wide range of vegetarian, vegan, and gluten-free options, along with a fully stocked bar offering Mexican beers, margaritas, cocktails, and soft drinks.



LOCATION



MORE INFO

 SEATING	 STANDING	PRIVATE DINING AVAILABLE
--	---	--------------------------------

45

N/A

YES

## GOOD EASTERN TAPHOUSE



- If you're enjoying the hiking and biking trails or relaxing at the lake, stop and visit us near the famous Whakarewarewa Forest.
- Hungry? Our talented chefs have created a mouth-watering menu with something for everyone.
- Thirsty? We have a variety of Good George Brewing craft beer and cider on tap.



LOCATION



MORE INFO



SEATING

200



STANDING

Large venue

PRIVATE  
DINING  
AVAILABLE

YES

## MR WOLF, ROTORUA



- Located in a beautiful, historic building in the heart of Rotorua, Mr Wolf has quickly become a favourite café for locals and working professionals.
- The locally roasted coffee is a real drawcard, beautifully balanced flavours of floral, citrus, and chocolate notes with a nutty aftertaste. Sourced by the team from South America and Africa, the coffee is then roasted locally at Okere Falls.
- With its stylish and unique interior, featuring a British racing green colour scheme, art deco designs, and concrete walls, Mr Wolf offers a welcoming atmosphere to match its excellent food and coffee.



SEATING

30



STANDING

50

PRIVATE  
DINING  
AVAILABLE

No

LOCATION MORE INFO

## PIG & WHISTLE



- Pig & Whistle Historic Pub offers a wide range of New Zealand craft beer and cider on tap and New Zealand wines to complement great pub food served by friendly staff who will make your visit one you'll want to repeat.
- Centrally located in a classic piece of bold 1940's architecture, the Pig & Whistle is a local landmark with a great history.
- Join us every Friday & Saturday at 10pm for live bands and entertainment. Rock, Pop and everything in between for a good night.



	SEATING	STANDING	PRIVATE DINING AVAILABLE
Outside	100	150-200	
Inside	50	100	YES
Upstairs	45	85	

## POCO TAPAS AND WINE



- Intimate, stylish space located in Rotorua's city centre just off Eat Street.
- Delicious tapas style menu that changes seasonally, making the most of locally sourced ingredients.
- Warm and welcoming atmosphere, amazing service.



SEATING	STANDING	PRIVATE DINING AVAILABLE
45	45	NO

## SCOPE ROTORUA



- Award Winning - Cafe of the Year, People's Choice.
- An oasis in the centre of town, close to shopping and banks, offering award-winning coffee, wine, beer and cuisine. Don't just take our word for it, check out our reviews for what our customers have to say.
- Open seven days.



LOCATION



MORE INFO



SEATING

55



STANDING

60

PRIVATE  
DINING  
AVAILABLE

-

## STRATOSFARE RESTAURANT AND BAR



- Set amongst the stars atop Mount Ngongotahā, Skyline Rotorua's Stratosfare Restaurant and Bar is home to some of New Zealand's best award-winning cuisine.
- Enjoy a delicious lunch or dinner featuring a stunning array of freshly prepared and cooked-to-order dishes highlighting locally sourced seafood, meat and produce.
- The contemporary ambience features luxurious Italian marble, granite, schist, timber and David Trubridge lights, while the panoramic view of Lake Rotorua is a sight to behold.



LOCATION



MORE INFO



SEATING

350



STANDING

1000

PRIVATE  
DINING  
AVAILABLE

YES

## TE PUIA - PĀTAKA KAI



- Pātaka Kai is the only restaurant in the world that overlooks a geyser as magnificent as our powerful Pōhutu Geyser.
- Dine for brunch on the deck or lunch inside while enjoying the full view through our floor-to-ceiling windows.
- For unique evening dining, be sure to try our dinner buffet, where you'll see Pōhutu lit up.
- Each dish has a twist of authentic Māori cuisine, and is crafted with locally sourced and freshly prepared ingredients by our award-winning chefs.



LOCATION



MORE INFO



SEATING

120



STANDING

N/A

PRIVATE  
DINING  
AVAILABLE

NO

## THE FAINTING GOAT GASTROBAR



- The menu is designed to share and perfect for small and large groups.
- Our signature cocktail range features ingredients from New Zealand's up and coming artisan distilleries.
- On tap includes some well known and not so well known New Zealand craft brews.



LOCATION



MORE INFO



SEATING

100



STANDING

N/A

PRIVATE  
DINING  
AVAILABLE

Breakfast

## THE MAINS RESTAURANT



- The Mains Restaurant, located inside luxury lodge On The Point, offers locally sourced produce, seasonal fruit and vegetables, grown in their own garden and wherever possible everything is made from scratch.
- All this combined with a stunning outlook and location overlooking Lake Rotorua.
- Enjoy a meal from our talented team of award-winning chefs with international experience.



LOCATION



MORE INFO



SEATING

65



STANDING

100

PRIVATE  
DINING  
AVAILABLE

Yes

## THE REGENT ROOM



- The Regent Room is the perfect restaurant for everything from intimate dining to a business occasion.
- Experience a superb selection of award-winning, contemporary New Zealand cuisine designed to highlight locally sourced ingredients. Elegant cocktails and a sensational boutique wine list complement the menu.
- The Regent Room embodies an oasis of calm and charm with incredible service.



LOCATION



MORE INFO



SEATING

80



STANDING

100

PRIVATE  
DINING  
AVAILABLE

YES



# URBANO BISTRO





- Smart, casual café by day.
- Bistro dining by night.
- Suitable for casual and intimate dining, business meetings, family gatherings and corporate functions.



LOCATION



MORE INFO

 SEATING	 STANDING	PRIVATE DINING AVAILABLE
90	100	NO



# NGĀ MAHI A RĒHIA | ACTIVITIES



# NGĀ MAHI MĀTĀTOA | ADVENTURE



MORE INFO

Rotorua is home to some of the most innovative people living in New Zealand who have invented and created incredible attractions. Here you'll find the pedal-powered monorail Shweeb Racer; ziplines and swing bridges through ancient forests; ZORB giant inflatable balls; rafts down the world-famous Kaituna River; or even jet boat rides flying across Lake Rotorua. For the mild adventurer to the most hard-core action seeker, there is something for everyone.



# TE AO MĀORI | MĀORI CULTURE



MORE INFO

Rotorua is the best place in New Zealand to experience the customs, practices and beliefs of our indigenous Māori people. Awe-inspiring and authentic, Māori cultural tours and performances provide a special view into the historic lifestyle, traditions, mythology, art and more of Māori past and present. Watch a spine-tingling traditional pōhiri (welcoming ceremony), hear the hauntingly beautiful call of the kuia (female elder), learn to dance with poi or perform the haka. Watch as your dinner is pulled from a traditional hāngī (steam-cooked meal) straight out of the ground.



# NGĀ WĀHI HAUORA | SPA & WELLNESS



MORE INFO

Living in a volcanic environment means we're surrounded by mineral-rich geothermal waters and mud, which are revered for their healing properties. Since the late 19th century, people have travelled from all over the world to seek the famed health benefits. Today, we still work with Papatūānuku (Earth Mother) to harness her geothermal activity and natural resources, which has resulted in a world-renowned spa and wellness industry.

# HAHAUPŌRO | GOLF



MORE INFO

Book in for a round and enjoy a magnificent golfing experience with breath-taking scenery at one of Rotorua's golf clubs. Active geothermal areas and stunning vistas make our courses truly unique. Rotorua is a premier destination for corporate golf days with clubs close to major hotels and motels in the city, and one right next door to the Whakarewarewa Thermal Reserve and Te Puia. Come and see why one round here is never enough.





# HAEPAPA PĀPORI Ā RANGATŌPŪ

# CORPORATE SOCIAL RESPONSIBILITY



## CONSERVATION CREDITS



- Support worthy conservation initiatives through the Conservation Credit programme. Each project has been selected as ecologically significant, with an annual plan and annual budget that can verify the funds directed to them go directly to conservation initiatives. Rotorua based projects include: Kaharoa Kokako Trust, the Biodiversity Bank, and Wingspan Birds of Prey Trust.
- Conservation credits are purchased in increments of \$500 and are endorsed with the project and the year of support. Each business gets their name on the conservation credit website and joins a list of companies taking regenerative business seriously.
- The Biodiversity Bank has Hands on opportunities available from the purchase of 5 credits these include: track building, tree planting, weed clearing, bridge building and hands on science.



MORE INFO

## DRESS FOR SUCCESS BAY OF PLENTY



- We help break the cycle of poverty by providing clients with professional attire to help them secure employment, as well as programmes to assist with their confidence and knowledge.
- Appropriate corporate attire will help a woman feel confident and present well during a job interview, giving her a better chance of securing an employment role and moving toward economic independence.
- Conference delegates can donate a piece of gently-used professional clothing at conference registration which is then picked up by our team. These items of clothing will either be given to a client to wear to an interview or new job, or it will be sold in our op-shop with proceeds supporting Dress for Success Bay of Plenty.



MORE INFO



## KĀNUKA BOUTIQUE FLORIST



- Talk to us about event flowers. Our stunning florals, including lush arrangements and presentation bouquets will make a beautiful addition to your event or gala dinner, and we will happily pick these up following your event and donate them to a local nursing home or women's refuge, or a charity of your choice, on your behalf.
- This is a simple way for your event to leave something nice for the community to enjoy.



MORE INFO

## NATIONAL KIWI HATCHERY



- The largest and most successful kiwi hatchery in the world, the National Kiwi Hatchery is the leader in kiwi husbandry, egg incubation systems, hatching techniques and kiwi chick rearing.
- We welcome your conference delegates to take an immersive journey to learn about Kiwi, their native environment and what makes them truly iconic the world over. 100% of the ticket price goes straight back to our kiwi hatching program.
- Make a donation to the National Kiwi Hatchery and help support the work to save, hatch and release kiwi back into their native habitat. A donation of \$300 will feed a kiwi chick for a whole year or, for a donation of \$2787 we will assign an egg to you. You can let us know the name of your chick before it hatches! Your donation covers all the costs to raise your kiwi chick and you will be invited to visit your chick and be sent photos of its progress.



MORE INFO



## WAIARIKI WOMEN'S REFUGE



- Waiariki Women's Refuge offers support to women and whanāu across Rotorua and surrounding areas in a variety of ways.
- Donations of conservative clothing, personal hygiene products and children's toys are made into packs that are given to whanāu when they have to leave their home in a hurry.
- You can encourage delegates to bring an item to donate at registration. A team member from Waiariki Women's Refuge can attend the conference to pick up the donations and make a short thank you speech.



MORE INFO

## CUSTOMISED CSR OPPORTUNITIES



- The RotoruaNZ Business Events team support and facilitate a range of ways for your delegates to give back to your conference destination.
- Some of these ways include donating time and expertise, or donating materials or other items to a relevant community group. The possibilities are endless, and we are here to facilitate any ideas that align with the ethos of your organisation.
- Please reach out if you would like to discuss a customised CSR option for your group.



MORE INFO



# TE HIHIRITANGA O TE ARA HAERE | ITINERARY INSPIRATION

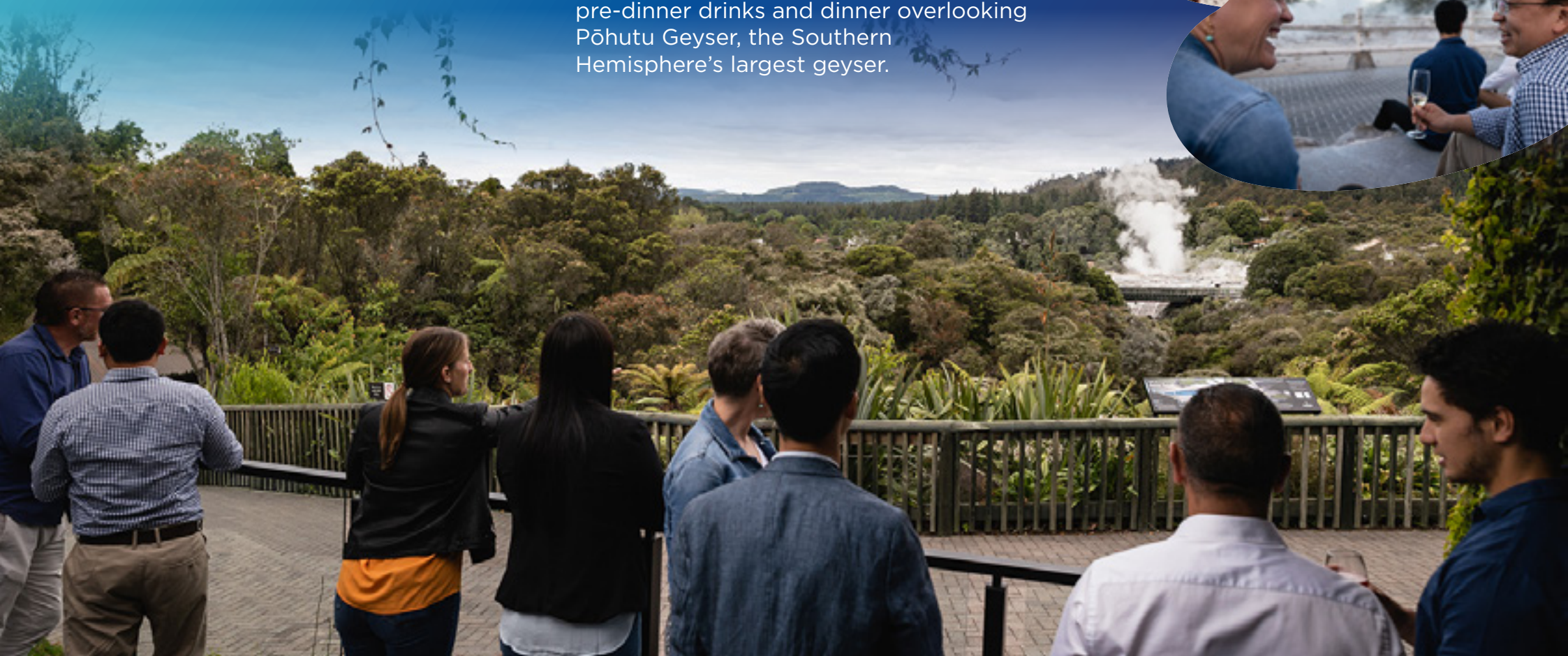




# THREE-DAY CONFERENCE ITINERARY

## Day 1: Welcome Function

Welcome your delegates with a pōhiri, a Māori welcome ceremony, followed by pre-dinner drinks and dinner overlooking Pōhutu Geyser, the Southern Hemisphere's largest geyser.





## Day 2: Conference

Host your conference at one of Rotorua's nine conference hotels or Energy Events Centre, all within a short drive from the city centre.

In the evening, give your delegates a free night to explore the inner city and enjoy the dining precinct, Eat Street.

## Day 3: Conference, Activity & Gala

Start the day off with a bit of business, then wrap up the conference with some afternoon fun. Whether it's soaking in our geothermal waters, heading out on a 4x4 drive, ziplining through the forest or hopping on a bike.

End the conference with an unforgettable evening awards or gala dinner overlooking the city's sparkling lights.





# THREE-DAY INCENTIVE ITINERARY

## Day 1: On the water and in the forest

Start your morning with the thrill of rafting down the world's highest commercially rafted waterfall, or even better, zipline from above and watch your delegates down below.

Once the sun sets, visit the forest and walk along the Redwoods Treewalk surrounded by towering trees lit by 30 exquisite lanterns.

It's time for dinner, so once you've finished the Treewalk, you'll make your way through the serene forest to the Redwoods venues amid the towering Californian redwoods.





## Day 2: Adventures and thrills

Start today with a bit of adrenaline! Head to Off Road NZ and explore native bush with a muddy self-drive 4WD safari, the Monster 4x4 or clay bird shooting and archery. Once wrapped up, head to Off Road's Native Bush Camp for a classic Kiwi barbecue.

Spend the evening at Te Puia's Geyser Marquee for an intimate dinner and front-row seats to see Pōhutu Geyser erupting before your eyes.



## Day 3: From mountain tops to hot pools

Grab your aviators because you're boarding a Volcanic Air helicopter to explore Rotorua's beauty from above. After flying over the stunning lakes and forests, you'll land on the summit of Mount Tarawera, walk along the crater's edge and peer into the heart of New Zealand's largest modern-day volcanic eruption back in 1886.

In the afternoon, relax at Polynesian Spa. Book out the Retreat Day Spa and the geothermal pools overlooking Lake Rotorua.





# WAIHO MĀ MĀTAU KOE E MANAAKI

# LET US LOOK AFTER YOU

## LET'S TALK

[businessevents@rotoruanz.com](mailto:businessevents@rotoruanz.com)

[rotoruanz.com/meetings-and-conferences](http://rotoruanz.com/meetings-and-conferences)



**Tony Dickson**

Business Events Portfolio Manager

[Tony.Dickson@rotoruaNZ.com](mailto:Tony.Dickson@rotoruaNZ.com)

021 387 808



**Leah Morrison**

Sales Executive - Business Events

[Leah.Morrison@rotoruaNZ.com](mailto:Leah.Morrison@rotoruaNZ.com)

022 416 4389



**Claudia McNeil**

Sales Executive - Business Events

[Claudia.McNeil@rotoruaNZ.com](mailto:Claudia.McNeil@rotoruaNZ.com)

027 393 7625

